

ESSENTIAL
COLLECTION

by **Giblor's**
italian work/life specialist



rossini.
Your workwear since 1969

Giblor's
italian work*life* specialist

ESSENTIAL
COLLECTION

4	ITALIAN FAMILIES STORY
6 ÷ 45	Chef Style
8	GIACCHE CHEF / <i>CHEF'S JACKETS</i>
28	PANTALONI CHEF / <i>CHEF'S PANTS</i>
36	GREMBIULI CHEF / <i>CHEF'S APRONS</i>
40	ACCESSORI CHEF / <i>CHEF'S ACCESSORIES</i>
44	CALZATURE CHEF / <i>CHEF'S FOOTWEAR</i>
46 ÷ 129	Ho.Re.Ca. & Service
48	GREMBIULI / <i>APRONS</i>
96	ACCESSORI / <i>ACCESSORIES</i>
104	COMPLETI / <i>SUITS AND JACKETS</i>
108	GILET / <i>WAISTCOATS</i>
110	PANTALONI / <i>PANTS</i>
112	CAMICIE / <i>SHIRTS AND BLOUSES</i>
116	CAMICI / <i>COATS</i>
120	CASACCHE / <i>TUNICS</i>
130 ÷ 163	Health&Wellness
132	CAMICI / <i>APRONS</i>
136	CASACCHE E PANTALONI / <i>TUNICS AND PANTS</i>
164 ÷ 169	TESSUTI, LAVAGGI E CONSIGLI TECNICI <i>FABRICS, WASHING SYMBOLS AND TECHNICAL ADVICES</i>
170	INDICE ALFABETICO PRODOTTI <i>ALPHABETICAL INDEX OF PRODUCTS</i>

ESSENTIAL

COLLECTION

Vuoi essere tu il prossimo
Protagonista Giblor's?
Seguici e partecipa!



Giblor's
italian worklife specialist



#DIVENTAPROTAGONISTAGIBLORS

Italian families story

Le belle storie iniziano sempre con impegno e passione. Se poi l'entusiasmo viene condiviso con qualcuno che crede in un progetto e collabora per farlo crescere, il futuro offre ancora più prospettive.

La famiglia Giberti lo ha imparato molti anni fa, fin da quando i fratelli Roberto e Loris decisero di rilanciare la piccola azienda sartoriale fondata dai genitori.

Negli stessi anni, l'azienda Rossini cresceva su presupposti simili, grazie all'impegno di Marco e delle due sorelle Wilma e Tiziana.

Due famiglie diverse che, insieme, contano quasi 100 anni di esperienza, idee, aspirazioni e una visione imprenditoriale legata alle radici e alla tradizione familiare.

Valori comuni che, ora, hanno portato il marchio GIBLOR'S ad entrare a far parte del gruppo Rossini Trading S.p.A. con l'intento di alzare ancora di più gli standard qualitativi nel settore dell'abbigliamento professionale in Italia.

Un'acquisizione che lascia alla guida di GIBLOR'S il suo AD storico, Roberto Giberti, in linea con l'approccio che ha permesso all'azienda di crescere e distinguersi per impegno artigianale, stile sartoriale, qualità, tecnologia e attenzione al design.

Competenze e valori che, in modi diversi ma affini, Rossini e GIBLOR'S hanno intrecciato come i fili di un'unica trama e che, da oggi, diventano gli elementi di un progetto più grande e importante.

Una nuova storia condivisa, con l'obiettivo di dividere i compiti, moltiplicare il successo e affrontare con determinazione tutte le sfide del futuro.

Good stories always start with commitment and passion.

When the enthusiasm is shared with someone who believes in a project and collaborates to make it grow, the future offers even more perspectives.

The Giberti family learned it many years ago, ever since the brothers Roberto and Loris decided to relaunch the small tailoring company founded by their parents. In the same years, the Rossini company grew on similar assumptions, thanks to the commitment of Marco and the two sisters Wilma and Tiziana.

Two different families that, together, have almost 100 years of experience, ideas, aspirations and an entrepreneurial vision linked to the roots and to the family tradition. Common values that, now, have led the GIBLOR'S brand to become part of the Rossini Trading S.p.A. group with the intention of raising even more the quality standards in the professional clothing field in Italy.

An acquisition that leaves its longstanding CEO, Roberto Giberti, at the helm of GIBLOR'S, in line with the approach that has allowed the company to grow and stand out for its craftsmanship, tailoring style, quality, technology and attention to design.

Skills and values that, in different but similar ways, Rossini and GIBLOR'S have intertwined like the threads of a single weave and which, from today, become the elements of a larger and more important project.

A new shared history, with the aim of dividing tasks, multiplying success and facing all the challenges of the future with determination.

GIBLOR'S

italian work/life specialist

è un'azienda del gruppo

ROSSINI







La collezione **Giblor's Essential** nasce per soddisfare una fascia di consumatori molto attenta all'equilibrio qualità prezzo, e si deve alla grande esperienza maturata dal brand in quasi cinquant'anni di attività.

I capi che troverete nella linea **Essential Chef & Ho.Re.Ca.** infatti mantengono gli standard che contraddistinguono da sempre gli articoli a marchio **Giblor's** e sono studiati per garantire un'ottima vestibilità e il massimo comfort durante le ore di lavoro.

La collezione si compone di giacche classiche con bottoni estraibili, ma ospita anche giacche in tessuto cotone stretch. Grande spazio è riservato ai grembiuli, in un'ampissima gamma di colori, da quelli in poli-cotone a quelli in poliestere no stiro, tutti corredati dai propri accessori.

ESSENTIAL

COLLECTION

*The **Giblor's Essential** collection was created to satisfy a range of consumers who are very attentive to the price quality balance, and this due to the great experience gained by the brand in almost fifty years of activity.*

*The garments that you will find in the **Essential Chef & Ho.Re.Ca.** line, in fact, maintain the standards that have always distinguished **Giblor's** branded items and are designed to ensure an excellent fit and maximum comfort during working hours.*

The collection consists of classic jackets with removable buttons, but also includes jackets in stretch cotton fabric. Large space is reserved for aprons, in a very wide range of colours, from those in poly-cotton to those in non-iron polyester, all furnished with their own accessories.

chef style

Giacche bottoni a pressione
Press stud fastening jackets

AUGUSTIN

Dettagli / Details

- Abbottonatura nascosta con automatici
- Taschino portapenne sulla manica

- Concealed buttoning with press studs
- Pen pocket on sleeve

Taglie / Sizes

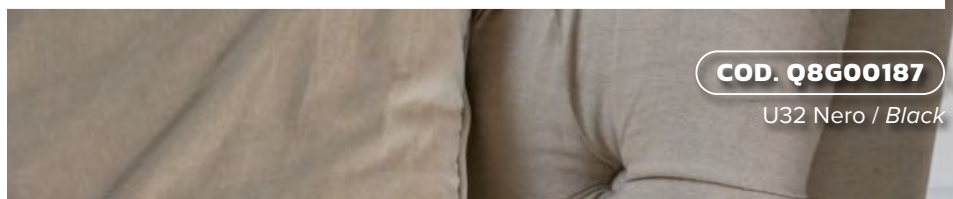
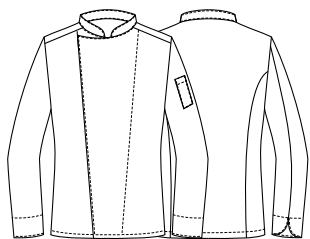
S ÷ 4XL Slim Fit

COD. Q8G00187

C01 Bianco / White
U32 Nero / Black

Tessuto / Fabric

97% cotone 3% elasthan
97% cotton 3% elastane
185 g / m²



COD. Q8G00187

U32 Nero / Black

COMFORT



COD. Q8G00187

C01 Bianco / White

COMFORT



COD. Q8G00188

U32 Nero / Black

chef style

Giacche bottoni a pressione
Press stud fastening jackets

CELINE

Dettagli / Details

- Abbottonatura nascosta con automatici
- Taschino portapenne sulla manica

- Concealed buttoning with press studs
- Pen pocket on sleeve

Taglie / Sizes

XS ÷ 3XL Slim Fit

COD. Q8G00188

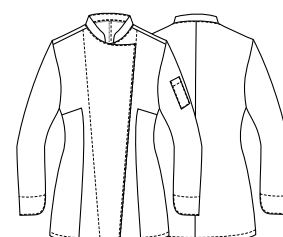
U32 Nero / Black
C01 Bianco / White

Tessuto / Fabric

97% cotone 3% elasthan
97% cotton 3% elastane
185 g / m²



COMFORT



COD. Q8G00188

C01 Bianco / White



COMFORT



COD. Q8GX0106

Art. 19P08G098
J32 Jeans nero / Black jeans

ULISSE

Dettagli / Details

- Abbottonatura nascosta con automatici
 - Taschino sul petto
 - Taschino portapenne sulla manica
 - 2 spacchetti dietro
 - Inserti in alcantara
 - Asola nel collo per laccio grembiule
- *Concealed buttoning with press studs*
- *Breast pocket*
- *Pen pocket on sleeve*
- *2 rear vents*
- *Alcantara panels*
- *Eyelet to insert the halter of the apron*

Taglie / Sizes

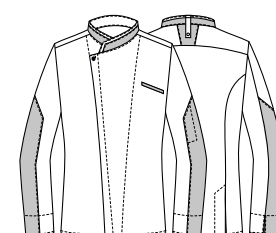
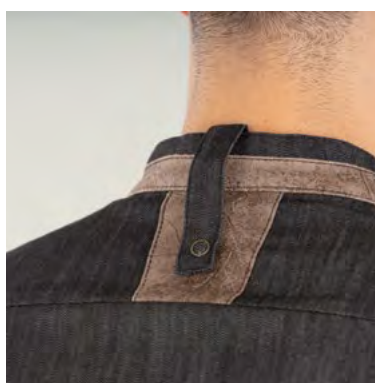
S ÷ 4XL Slim Fit

COD. Q8GX0106

Art. 19P08G098
J32 Jeans nero / Black jeans

Tessuto / Fabric

75% cotone 23% poliestere 2% elasthan
75% cotton 23% polyester 2% elastane
210 g / m²



chef style

Giacche bottoni a pressione
Press stud fastening jackets

DIONISIO

Dettagli / Details

- Abbottonatura nascosta con automatici
- Taschino sul petto
- Taschino portapenne sulla manica
- Inserti in rete
- 2 spacchetti dietro
- Asola nel collo per inserire il laccio del grembiule
- Inserti in jeans

- *Concealed buttoning with press studs*
- *Breast pocket*
- *Pen pocket on sleeve*
- *Network fabric panels*
- *2 rear vents*
- *Eyelet to insert the halter of the apron*
- *Jeans inserts*

Taglie / Sizes

S ÷ 4XL Slim Fit

COD. Q8GX0107

Art. 19P08G084
U32 Nero / Black

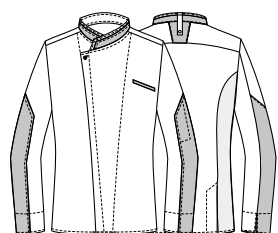
Tessuto / Fabric

50% lyocell 50% poliestere
50% lyocell 50% polyester
180 g / m²

PANTALONI COORDINABILI
MATCHING PANTS

GIOVE

pag. 33





Tencel™
Feels so right

COD. Q8GX0107

Art. 19P08G084
U32 Nero / Black

chef style

Giacche bottoni a pressione
Press stud fastening jackets

PATRIZIO

Dettagli / Details

- Abbottonatura nascosta con automatici
- Taschino sul petto
- Taschino portapenne sulla manica
- Inserti in rete
- Profilo grigio

- Concealed buttoning with press studs
- Breast pocket
- Pen pocket on sleeve
- Network fabric panels
- Grey piping

Taglie / Sizes

S ÷ 4XL Slim Fit

COD. Q8G00190

Z48 Blu / Blue
U35 Bordeaux / Burgundy
U32 Nero / Black

Tessuto / Fabric

65% poliestere 35% cotone
65% polyester 35% cotton
200 g / m²

COD. Q8G00189

C01 Bianco / White

Tessuto / Fabric

100% cotone
100% cotton
185 g / m²



COD. Q8G00190

U32 Nero / Black



COD. Q8G00190

Z48 Blu / Blue



COD. Q8G00190

U35 Bordeaux / Burgundy



COD. Q8G00190

U32 Nero / Black



COD. Q8G00189

C01 Bianco / White



chef style

Giacche bottoni a pressione
Press stud fastening jackets

SUSI

Dettagli / Details

- Abbottonatura nascosta con automatici
- Taschino sul petto
- Taschino portapenne sulla manica
- Inserti in rete
- Profilo grigio

- *Concealed buttoning with press studs*
- *Breast pocket*
- *Pen pocket on sleeve*
- *Network fabric panels*
- *Grey piping*

Taglie / Sizes

XS ÷ 3XL Slim Fit

COD. Q8G00191

C01 Bianco / White

Tessuto / Fabric

100% cotone
100% cotton
185 g / m²

COD. Q8G00192

Z48 Blu / Blue
U35 Bordeaux / Burgundy
U32 Nero / Black

Tessuto / Fabric

65% poliestere 35% cotone
65% polyester 35% cotton
200 g / m²



COD. Q8G00191

C01 Bianco / White



COD. Q8G00192

Z48 Blu / Blue



COD. Q8G00192

U35 Bordeaux / Burgundy



COD. Q8G00192

U32 Nero / Black



COD. Q8G00191

C01 Bianco / White



chef style

Giacche bottoni a pressione
Press stud fastening jackets

PATRIZIO

Dettagli / Details

- Abbottonatura nascosta con automatici
- Taschino sul petto
- Taschino portapenne sulla manica
- Inserti in rete
- Profilo tricolore italiano

- Concealed buttoning with press studs
- Breast pocket
- Pen pocket on sleeve
- Network fabric panels
- Italian flag piping

Taglie / Sizes

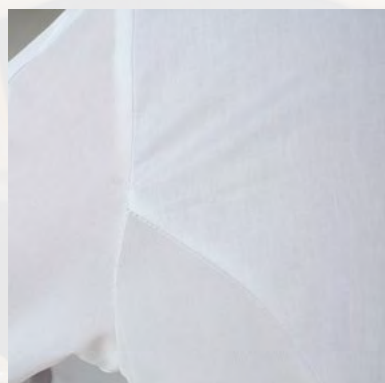
S ÷ 4XL Slim Fit

COD. Q8G00189

P50 ITA / ITA

Tessuto / Fabric

100% cotone
100% cotton
185 g / m²



chef style

Giacche bottoni a pressione
Press stud fastening jackets

SUSI

Dettagli / Details

- Abbottonatura nascosta con automatici
 - Taschino sul petto
 - Taschino portapenne sulla manica
 - Inserti in rete
 - Profilo tricolore italiano
-
- Concealed buttoning with press studs
 - Breast pocket
 - Pen pocket on sleeve
 - Network fabric panels
 - Italian flag piping

Taglie / Sizes

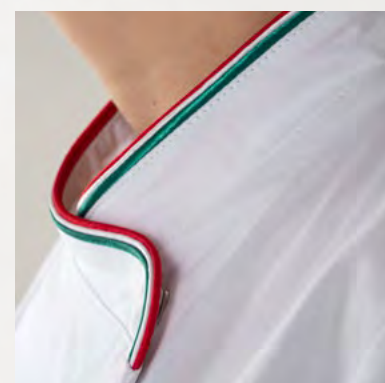
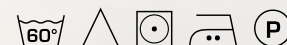
XS ÷ 3XL Slim Fit

COD. Q8G00191

P50 ITA / ITA

Tessuto / Fabric

100% cotone
100% cotton
185 g / m²



chef style

Giacche bottoni a pressione
Press stud fastening jackets

RAUL

Dettagli / Details

- Abbottonatura nascosta con automatici
- Taschino sul petto
- Taschino portapenne sulla manica
- Rete sulla schiena

- Concealed buttoning with press studs
- Breast pocket
- Pen pocket on sleeve
- Network fabric on the back

COD. Q8GX0104

Art. 22P08G322
C01 Bianco / White

Taglie / Sizes

S ÷ 4XL Slim Fit

Tessuto / Fabric

100% cotone / cotton
185 g / m²

COD. Q8GX0105

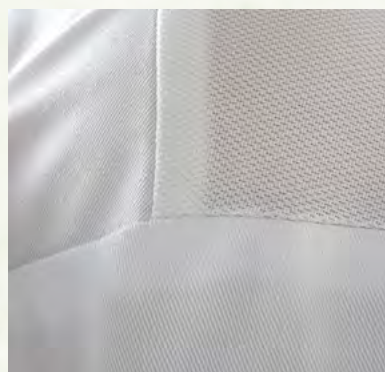
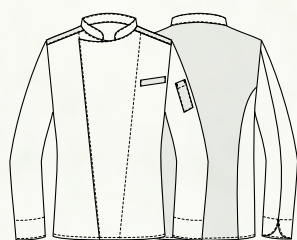
Art. 22P08G323
C02 Grigio / Grey
U32 Nero / Black
Z48 Blu / Blue
U35 Bordeaux / Burgundy
Z44 Marrone / Brown
Z41 Tortora / Taupe
Z43 Verde militare / Military green

Taglie / Sizes

S ÷ 4XL Slim Fit

Tessuto / Fabric

65% poliestere 35% cotone
65% polyester 35% cotton
200 g / m²



COD. Q8GX0105

Art. 22P08G323
Z48 Blu / Blue



COD. Q8GX0104

Art. 22P08G322
C01 Bianco / White



COD. Q8GX0105

Art. 22P08G323
C02 Grigio / Grey



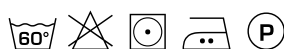
COD. Q8GX0105

Art. 22P08G323
U32 Nero / Black



COD. Q8GX0105

Art. 22P08G323
Z48 Blu / Blue



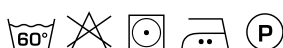
COD. Q8GX0105

Art. 22P08G323
U35 Bordeaux / Burgundy



COD. Q8GX0105

Art. 22P08G323
Z44 Marrone / Brown



COD. Q8GX0105

Art. 22P08G323
Z41 Tortora / Taupe



COD. Q8GX0105

Art. 22P08G323
Z43 Verde militare / Military green



chef style

Giacche bottoni a pressione
Press stud fastening jackets

THIAGO

Dettagli / Details

- Abbottonatura nascosta con automatici
- Taschino sul petto - Rete sulla schiena

- Concealed buttoning with press studs
- Breast pocket - Network fabric on the back

COD. Q8GX0100

Art. 15P08G641
C01 Bianco / White

Taglie / Sizes

S ÷ 5XL Slim Fit

Tessuto / Fabric

100% cotone / cotton
185 g / m²

COD. Q8GX0102

Art. 19P08G640
C02 Grigio / Grey

Taglie / Sizes

S ÷ 4XL Slim Fit

Tessuto / Fabric

65% poliestere 35% cotone
65% polyester 35% cotton
200 g / m²

COD. Q8GX0101

Art. 15P08G640
U32 Nero / Black

Taglie / Sizes

S ÷ 5XL Slim Fit

Tessuto / Fabric

65% poliestere 35% cotone
65% polyester 35% cotton
200 g / m²

COD. Q8GX0103

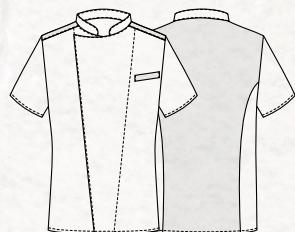
Art. 22P08G640
Z48 Blu / Blue
U35 Bordeaux / Burgundy
Z44 Marrone / Brown
Z41 Tortora / Taupe
Z43 Verde militare / Military green

Taglie / Sizes

S ÷ 4XL Slim Fit

Tessuto / Fabric

65% poliestere 35% cotone
65% polyester 35% cotton
200 g / m²



COD. Q8GX0103

Art. 22P08G640
Z43 Verde militare / Military green



COD. Q8GX0100

Art. 15P08G641
C01 Bianco / White



COD. Q8GX0102

Art. 19P08G640
C02 Grigio / Grey



COD. Q8GX0101

Art. 15P08G640
U32 Nero / Black



COD. Q8GX0103

Art. 22P08G640
Z48 Blu / Blue



COD. Q8GX0103

Art. 22P08G640
U35 Bordeaux / Burgundy



COD. Q8GX0103

Art. 22P08G640
Z44 Marrone / Brown



COD. Q8GX0103

Art. 22P08G640
Z41 Tortora / Taupe



COD. Q8GX0103

Art. 22P08G640
Z43 Verde militare / Military green



chef style

Giacche bottone estraibile
Removable button jackets

ADRIANO

Dettagli / Details

- Bottoni estraibili
- Taschino portapenne sulla manica

- Removable buttons
- Pen pocket on sleeve

Taglie / Sizes

XS ÷ 5XL Slim Fit

COD. Q8G00183

C01 Bianco / White

Tessuto / Fabric

100% cotone
100% cotton
185 g / m²

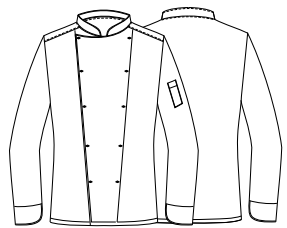


COD. Q8G00184

U32 Nero / Black

Tessuto / Fabric

65% poliestere 35% cotone
65% polyester 35% cotton
200 g / m²



COD. Q8G00184

U32 Nero / Black

COD. Q8G00183

C01 Bianco / White

TOMMASO

Dettagli / Details

- Bottoni estraibili
- Taschino portapenne sulla manica

- Removable buttons
- Pen pocket on sleeve

Taglie / Sizes

XS ÷ 5XL Slim Fit

COD. Q8G00185

C01 Bianco / White

Tessuto / Fabric

100% cotone
100% cotton
185 g / m²

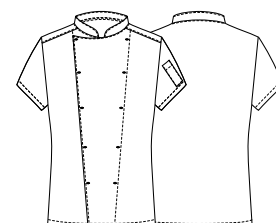


COD. Q8G00186

U32 Nero / Black

Tessuto / Fabric

65% poliestere 35% cotone
65% polyester 35% cotton
200 g / m²



COD. Q8G00185

C01 Bianco / White

COD. Q8G00186

U32 Nero / Black

chef style

Pantaloni
Pants



PLUTONE

Dettagli / Details

- 2 tasche
- 1 tasca sul retro
- Elastico e coulisse

- 2 pockets
- 1 rear pocket
- Elasticated waistband with drawstring

Taglie / Sizes

XS ÷ 5XL Slim Fit

COD. Q8P00194

U32 Nero / Black

Tessuto / Fabric

65% poliestere 35% cotone
65% polyester 35% cotton
200 g / m²

COD. Q8P00195

Q32 - Quadro nero / Black checkered

Tessuto / Fabric

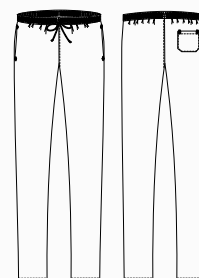
100% cotone
100% cotton
200 g / m²

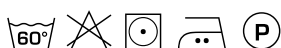
COD. Q8P00193

C01 Bianco / White

Tessuto / Fabric

100% cotone
100% cotton
185 g / m²





IVAN

Dettagli / Details

- 2 tasche davanti
- 2 tasche sul retro
- Elastico e coulisse

- 2 pockets in front
- 2 rear pockets
- Elasticated waistband with drawstring

Taglie / Sizes

XS ÷ 4XL Slim Fit

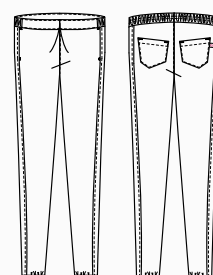
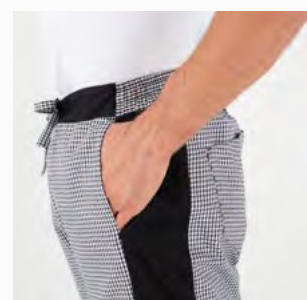
COD. Q8PX0280

Art. 23P08P372

G32 Gessato nero / Black pinstriped
Q32 Quadro nero / Black checkered

Tessuto / Fabric

100% cotone
100% cotton
200 g / m²



chef style

Pantaloni

Pants



ENRICO

Dettagli / Details

- 2 tasche
- 1 tasca sul retro
- Elastico e coulisse
- Chiusura zip

- 2 pockets
- 1 rear pocket
- Elasticated waistband with drawstring
- Zip fly

Taglie / Sizes

XS ÷ 5XL Regular Fit

COD. Q8PX0108

Art. 11P08P20

G32 Gessato nero / *Black pinstriped*

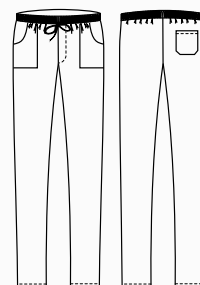
G12 Gessato grigio / *Grey pinstriped*

Tessuto / Fabric

70% cotone 30% poliestere

70% cotton 30% polyester

145 g / m²





ENRICO

Dettagli / Details

- 2 tasche
- 1 tasca sul retro
- Elastico e coulisse
- Chiusura zip

- 2 pockets
- 1 rear pocket
- Elasticated waistband with drawstring
- Zip fly

Taglie / Sizes

XS ÷ 5XL Regular Fit

COD. Q8PX0108

Art. 11P08P20

G48 Gessato blu / Blue pinstriped

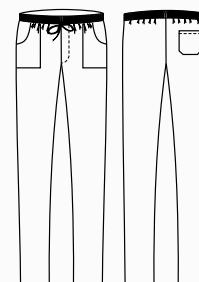
G35 Gessato bordeaux / Burgundy pinstriped

Tessuto / Fabric

70% cotone 30% poliestere

70% cotton 30% polyester

145 g / m²





ENRICO

Dettagli / Details

- 2 tasche
- 1 tasca sul retro
- Elastico e coulisse in vita
- Chiusura zip

- 2 pockets
- 1 rear pocket
- Elasticated waistband with drawstring
- Zip fly

Taglie / Sizes

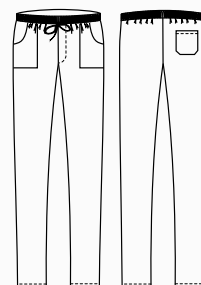
XS ÷ 5XL Regular Fit

COD. Q8PX0109

Art. 19P08P20
R32 Rigato nero / *Black striped*
R12 Rigato grigio / *Grey striped*

Tessuto / Fabric

70% cotone 30% poliestere
70% cotton 30% polyester
145 g / m²





COMFORT



COMFORT

GIOVE

Dettagli / Details

- 2 tasche
- 2 tasche sul retro
- Elastico in vita
- Chiusura zip
- Passanti cintura
- Inserto in rete traspirante

- 2 pockets
- 2 rear pockets
- Elasticated waistband
- Zip fly
- Belt loops
- Network fabric panel

Taglie / Sizes

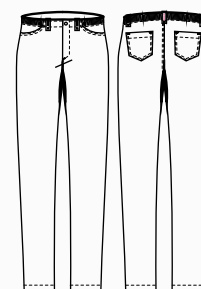
XS ÷ 4XL Slim Fit

COD. Q8PX0114

Art. 19P08P109
J32 Jeans nero / *Black jeans*
J02 Jeans grigio / *Grey jeans*

Tessuto / Fabric

75% cotone 23% poliestere 2% elastan
75% cotton 23% polyester 2% elastane
210 g / m²



I PANTALONI GIOVE HANNO L'ELASTICO IN VITA TERGISUDORE
E INSERTI IN RETE TRASPIRANTE

GIOVE PANTS HAVE AN ELASTICATED SWEATBAND
AND BREATHABLE NETWORK FABRIC PANELS

chef style

Pantaloni

Pants

BRUCE

Dettagli / Details

- 2 tasche - Rete all over
- Elastico e coulisse

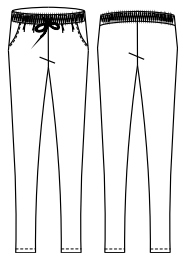
- 2 pockets - Network fabric all over
- Elasticated waistband with drawstring

COD. Q8PX015

Art. 20P08P186
U32 Nero / Black

Tessuto / Fabric

100% poliestere / polyester
160 g / m²



COD. Q8PX015

Art. 20P08P186
U32 Nero / Black
XS ÷ 4XL Slim Fit



COD. Q8PX010

Art. 20P08P185
U32 Nero / Black
XS ÷ 4XL Slim Fit



NOAH

Dettagli / Details

- 2 tasche - 1 tasca sul retro
- Elastico e coulisse

- 2 pockets - 1 rear pocket
- Elasticated waistband with drawstring

COD. Q8PX0110

Art. 20P08P185
U32 Nero / Black

Tessuto / Fabric

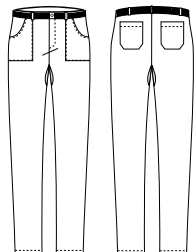
62% cotone 35% poliestere 3% elasthan
62% cotton 35% polyester 3% elastane
180 g / m²

COD. Q8PX0111

Art. 20P08P184
Z41 Tortora / Taupe
M12 Grigio / Grey

Tessuto / Fabric

65% poliestere 35% cotone
65% polyester 35% cotton
115 g / m²



ULTRA
LIGHT

COD. Q8PX0111

Art. 20P08P184
Z41 Tortora / Toupe
S ÷ 4XL Slim Fit



ULTRA
LIGHT

COD. Q8PX0111

Art. 20P08P184
M12 Grigio / Grey
S ÷ 4XL Slim Fit





ALAN

Dettagli / Details

- 2 tasche
- 1 tasca sul retro
- Elastico e coulisse

- 2 pockets
- 1 rear pocket
- Elasticated waistband with drawstring

Taglie / Sizes

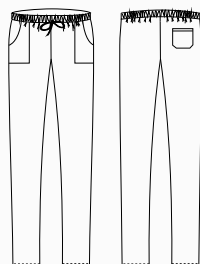
XS ÷ 3XL Slim Fit

COD. Q8PX012

Art. 14P08P477
F05 Menu nero / Black menu

Tessuto / Fabric

100% cotone / cotton
168 g / m²



ATENE

Dettagli / Details

- 2 tasche - 1 tasca sul retro
- Elastico e coulisse
- Chiusura zip

- 2 pockets - 1 rear pocket
- Elasticated waistband with drawstring
- Zip fly

Taglie / Sizes

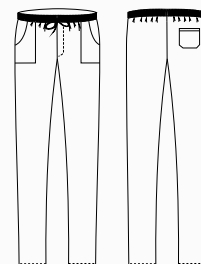
XS ÷ 4XL Regular Fit

COD. Q8PX013

Art. 10M1532
F04 Peperoncino / Chili

Tessuto / Fabric

100% cotone / cotton
168 g / m²





PARIGI

Dettagli / Details

-1 tasca

-1 pocket

Taglie / Sizes

Taglia unica / One size

Misure / Dimensions

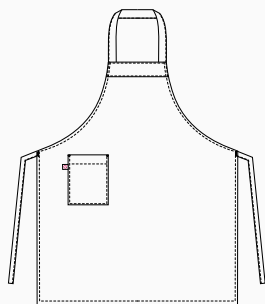
90x70 cm

COD. Q8HX0120

Art. 19P08H478
F14 Travel / Travel

Tessuto / Fabric

100% cotone / cotton
168 g / m²



ZAGABRIA

Dettagli / Details

-1 tasca

-1 pocket

Taglie / Sizes

Taglia unica / One size

Misure / Dimensions

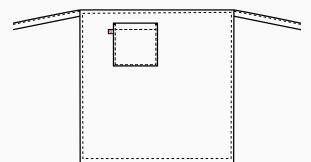
70x70 cm

COD. Q8HX0121

Art. 19P08H480
F14 Travel / Travel

Tessuto / Fabric

100% cotone / cotton
168 g / m²





PARIGI

Dettagli / Details

- 1 tasca
- 1 pocket

Misure / Dimensions 90x70 cm

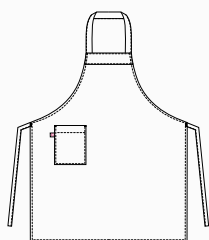
Taglie / Sizes Taglia unica / One size

COD. Q8HX0117

Art. 14P08H478
F05 Menu nero / Black menu

Tessuto / Fabric

100% cotone / cotton - 168 g / m²



ZAGABRIA

Dettagli / Details

- 1 tasca
- 1 pocket

Misure / Dimensions 70x70 cm

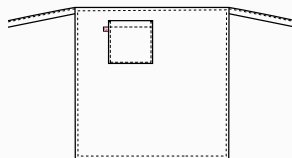
Taglie / Sizes Taglia unica / One size

COD. Q8HX0118

Art. 14P08H480
F05 Menu nero / Black menu

Tessuto / Fabric

100% cotone / cotton - 168 g / m²



LONDON

Dettagli / Details

- Scamciato - Coperto dietro
- 1 grande tasca
- Pinafore - Covered backside
- 1 big pocket

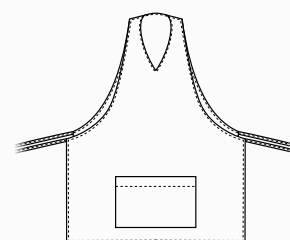
Taglie / Sizes Taglia unica / One size

COD. Q8HX0119

Art. 14P08H479
F05 Menu nero / Black menu

Tessuto / Fabric

100% cotone / cotton - 168 g / m²



GIUNONE

Dettagli / Details

- Baschina per nascondere il laccio
- *Basque to hide the string*

Taglie / Sizes

Taglia unica / One size

Misure / Dimensions

90x100 cm

COD. Q8H00196

C01 Bianco / White
P50 ITA / ITA

Tessuto / Fabric

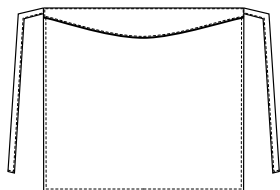
100% cotone
100% cotton
185 g / m²

COD. Q8H00197

U32 Nero / Black
Z48 Blu / Blue
U35 Bordeaux / Burgundy

Tessuto / Fabric

65% poliestere 35% cotone
65% polyester 35% cotton
200 g / m²



COD. Q8H00196

C01 Bianco / White



COD. Q8H00196

P50 ITA / ITA



COD. Q8H00197

U32 Nero / Black



COD. Q8H00197

Z48 Blu / Blue



COD. Q8H00197

U35 Bordeaux / Burgundy





COD. Q8H00201

U32 Nero / Black

65% poliestere 35% cotone
65% polyester 35% cotton
200 g / m²



COD. Q8H00200

C01 Bianco / White

100% cotone
100% cotton
185 g / m²



ANCONA

Dettagli / Details

- 1 tasca
- 1 pocket

Taglie / Sizes Taglia unica / One size

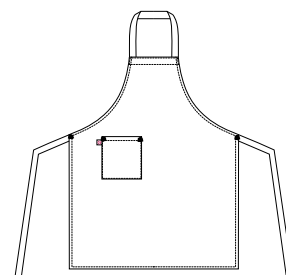
Misure / Dimensions 100x73 cm

COD. Q8H00201

U32 Nero / Black

COD. Q8H00200

C01 Bianco / White



MATERA

Dettagli / Details

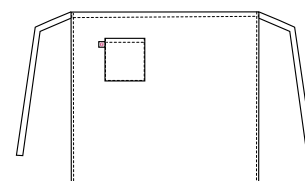
- 1 tasca
- 1 pocket

Taglie / Sizes Taglia unica / One size

Misure / Dimensions 75x105 cm

COD. Q8H00199

C01 Bianco / White



COD. Q8H00199

C01 Bianco / White

100% cotone
100% cotton
185 g / m²



COD. Q8H00198

C01 Bianco / White

100% cotone
100% cotton
185 g / m²



BARI

Dettagli / Details

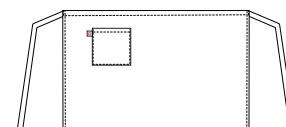
- 1 tasca
- 1 pocket

Taglie / Sizes Taglia unica / One size

Misure / Dimensions 45x80 cm

COD. Q8H00198

C01 Bianco / White



accessori

Toque

Toque

KLIMT

Dettagli / Details

- Regolabile con elastico
- Adjustable with elastic

Taglie / Sizes

Taglia unica / One size

COD. Q5100203

C01 Bianco / White
P50 ITA / ITA

Tessuto / Fabric

100% cotone / cotton
185 g / m²

COD. Q5100204

U32 Nero / Black

Tessuto / Fabric

65% poliestere 35% cotone
65% polyester 35% cotton
200 g / m²



COD. Q5100203

C01 Bianco / White



COD. Q5100203

P50 ITA / ITA



COD. Q5100203: venduto in confezioni da 2 pezzi.
COD. Q5100203: 2 pieces pack.



COD. Q5100204

U32 Nero / Black



COD. Q5100202

C01 Bianco / White



COD. Q5100204 - Q5100202: venduto in confezioni da 2 pezzi.
COD. Q5100204 - Q5100202: 2 pieces pack.

CAPPELLO SCUOLA

Taglie / Sizes

Taglia unica / One size

COD. Q5100202

C01 Bianco / White

Tessuto / Fabric

100% cotone / cotton
185 g / m²



COD. Q51X0217

Art. 10M416
F04 Peperoncino / Chili



COD. Q51X0122

Art. 14P051483
F05 Menu nero / Black menu



TOQUE

Taglie / Sizes

Taglia unica / One size

COD. Q51X0217

Art. 10M416

COD. Q51X0122

Art. 14P051483

Tessuto / Fabric

100% cotone / cotton
168 g / m²

MONET

Taglie / Sizes

Taglia unica / One size

COD. Q5100205

C01 Bianco / White

Tessuto / Fabric

100% cotone / cotton
185 g / m²

COD. Q5100206

U32 Nero / Black

Tessuto / Fabric

65% poliestere 35% cotone
65% polyester 35% cotton
200 g / m²



COD. Q5100205

C01 Bianco / White



COD. Q5100206

U32 Nero / Black





COD. R051

Bianco / White



COD. R001

Bianco / White



COPRICAPO

Taglie / Sizes
Taglia unica / One size

COD. R051

Bianco / White

Tessuto 1 / Fabric 1
100% cotone / cotton

Tessuto 2 / Fabric 2
Rete 100% poliestere
Network fabric 100% polyester

COD. R001

Bianco / White

Tessuto 1 / Fabric 1
100% cotone / cotton

Tessuto 2 / Fabric 2
Rete 100% poliestere
Network fabric 100% polyester



COD. R100



COD. R100



COD. R100

COD. R100: venduto in confezioni da 6 pezzi. Articolo aleatorio: non è possibile scegliere l'assortimento colore.
COD. R100: 6 pieces pack. Random color: the choice of the color is not allowed.



TORCIONE

Misure / Dimensions
56X80 cm

COD. R100

Colori assortiti / Assorted colors

Tessuto / Fabric
100% cotone / cotton

ANDY TRIANGOLO CUOCO

COD. Q5100265

C01 Bianco / White

Lunghezza / Length
95 cm

Tessuto / Fabric
100% cotone / cotton
185 g / m²

COD. Q5100266

U32 Nero / Black

Lunghezza / Length
95 cm

Tessuto / Fabric
65% poliestere 35% cotone
65% polyester 35% cotton
200 g / m²

COD. R140

Bianco / White

Lunghezza / Length
90 cm

Tessuto / Fabric
100% cotone / cotton
140 g / m²



COD. Q5100265

C01 Bianco / White



COD. Q5100265: venduto in confezioni da 4 pezzi.
COD. Q5100265: 4 pieces pack.



COD. Q5100266

U32 Nero / Black



COD. Q5100266: venduto in confezioni da 2 pezzi.
COD. Q5100266: 2 pieces pack.



COD. R140

Bianco / White



accessori

Bandana
Bandanas

BANDANA MARTE

*CON TERGISUDORE

Taglie / Sizes

Taglia unica / One size

***COD. Q5IX0126**

Art. 19P051865
U35 Bordeaux / Burgundy

***COD. Q5IX0125**

Art. 22P051865
Z48 Blu / Blue
Z44 Marrone / Brown

***COD. Q5IX0124**

Art. 20P051865
Z41 Tortora / Toupe
Z43 Verde militare / Military green

***COD. Q5IX0123**

Art. 17P051865
C02 Grigio / Grey

Tessuto / Fabric

65% poliestere 35% cotone
65% polyester 35% cotton
200 g / m²

***COD. Q5IX0128**

Art. 10M443
F04 Peperoncino / Chili

***COD. Q5IX0127**

Art. 14P051481
F05 Menu nero / Black menu

Tessuto / Fabric

100% cotone
100% cotton
168 g / m²

BANDANA GIOVE

Taglie / Sizes

Taglia unica / One size

COD. Q5100263

U32 Nero / Black
C01 Bianco / White

Tessuto / Fabric

65% poliestere 35% cotone
65% polyester 35% cotton
143 g / m²



***COD. Q5IX0126**

*Art. 19P051865
U35 Bordeaux / Burgundy



***COD. Q5IX0125**

*Art. 22P051865
Z48 Blu / Blue



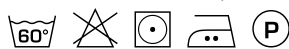
***COD. Q5IX0125**

*Art. 22P051865
Z44 Marrone / Brown



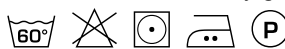
***COD. Q5IX0124**

*Art. 20P051865
Z41 Tortora / Taupe



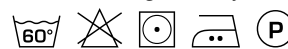
***COD. Q5IX0124**

*Art. 20P051865
Z43 Verde militare / Military green



***COD. Q5IX0123**

*Art. 17P051865
C02 Grigio / Grey



***COD. Q5IX0128**

*Art. 10M443
F04 Peperoncino / Chili



***COD. Q5IX0127**

*Art. 14P051481
F05 Menu nero / Black menu



COD. Q5100263

U32 Nero / Black



COD. Q5100263

C01 Bianco / White



***CON FASCIA TERGISUDORE**
***WITH SWEAT BAND**



***COD. Q5IX0123**

Art. 17P05I865
C02 Grigio / Grey

STELVIO CALZATURA ALIMENTARE

Tomaia / Upper

- Microfibra idrorepellente
- Puntale in composito

- *Water repellent microfiber*
- *Composite toe cap*

COD. SSVL114

Taglie / Sizes

36 ÷ 47

CE Certificazione CE / CE Certification
EN 20345 S2 SRC



Bianco / White

MINORCA SABOT

Tomaia / Upper

- Fibertex
- Puntale in composito

- *Fibertex*
- *Composite toe cap*

COD. SSEX115

Taglie / Sizes

35 ÷ 48

CE Certificazione CE / CE Certification
EN20345 SB E A SRC



Bianco / White

LANZAROTE SABOT

Tomaia / Upper

- Fibertex
- Puntale in composito

- *Fibertex*
- *Composite toe cap*

COD. SSEX116

Taglie / Sizes

35 ÷ 48

CE Certificazione CE / CE Certification
EN 20345 SB E A SRC



Nero / Black

ZOCCOLO POLIURETANO



CE **Certificazione CE / CE Certification**
EN 20347 E A FO SRA

Tomaia / Upper

- Pelle traforata traspirante
- Breathable perforated leather

COD. SSZ0005

(DONNA/WOMAN)

Taglie / Sizes

35 ÷ 40

COD. SSZ0006

(UOMO/MAN)

Taglie / Sizes

41 ÷ 46

ZOCCOLO POLIURETANO CON LACCETTO



CE **Certificazione CE / CE Certification**
EN 20347 E A FO SRA

Tomaia / Upper

- Pelle traforata traspirante
- Breathable perforated leather

COD. SSZ0007

(DONNA/WOMAN)

Taglie / Sizes

35 ÷ 40

COD. SSZ0008

(UOMO/MAN)

Taglie / Sizes

41 ÷ 46



Grebiule
LIONE
pag. 49

Grebiule
SCOTLAND
pag. 49





NAPOLI

Dettagli / Details

- 1 tasca

- 1 pocket

Taglie / Sizes

Taglia unica / One size

Misure / Dimensions

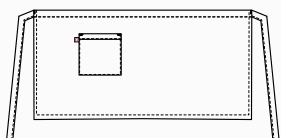
43x70 cm

COD. Q1HX0129

Art. 20P01H147
D21 Beige / Beige

Tessuto / Fabric

100% poliestere / polyester
170 g / m²



RENO

Dettagli / Details

- 2 tasche - 1 taschino portapenne
- Allacciatura collo regolabile con bottoni

- 2 pockets - 1 pen pocket

- Adjustable halter with buttons

Taglie / Sizes

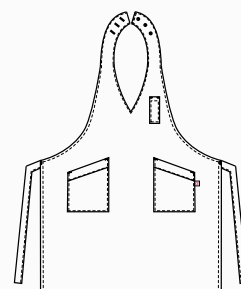
Taglia unica / One size

COD. Q1HX0130

Art. 20P01H158
D21 Beige / Beige

Tessuto / Fabric

100% poliestere / polyester
170 g / m²





LIONE

Dettagli / Details

- 1 tasca

- 1 pocket

Taglie / Sizes

Taglia unica / One size

Misure / Dimensions

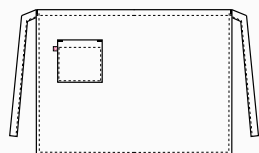
70x98 cm

COD. Q1HX0131

Art. 20P01H159
D21 Beige / Beige

Tessuto / Fabric

100% poliestere / polyester
170 g / m²



SCOTLAND

Dettagli / Details

- 1 grande tasca - 1 taschino portapenne
- Allacciatura collo regolabile con bottoni

- 1 big pocket - 1 pen pocket
- Adjustable halter with buttons

Taglie / Sizes

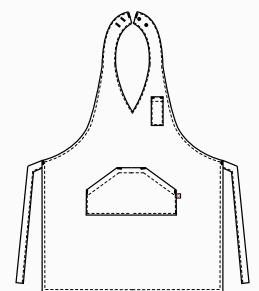
Taglia unica / One size

COD. Q1HX0132

Art. 20P01H2055
D21 Beige / Beige

Tessuto / Fabric

100% poliestere / polyester
170 g / m²





NAPOLI

Dettagli / Details

- 1 tasca

- 1 pocket

Taglie / Sizes

Taglia unica / One size

Misure / Dimensions

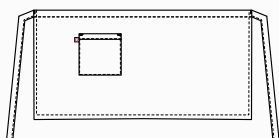
43x70 cm

COD. Q1HX0129

Art. 20P01H147
C02 Grigio / Grey

Tessuto / Fabric

100% poliestere / polyester
170 g / m²



RENO

Dettagli / Details

- 2 tasche - 1 taschino portapenne
- Allacciatura collo regolabile con bottoni

- 2 pockets - 1 pen pocket

- Adjustable halter with buttons

Taglie / Sizes

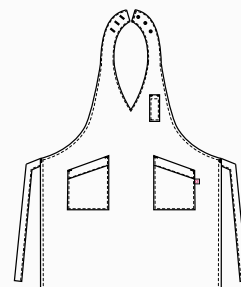
Taglia unica / One size

COD. Q1HX0130

Art. 20P01H158
C02 Grigio / Grey

Tessuto / Fabric

100% poliestere / polyester
170 g / m²





LIONE

Dettagli / Details

- 1 tasca

- 1 pocket

Taglie / Sizes

Taglia unica / One size

Misure / Dimensions

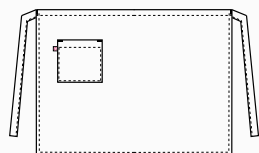
70x98 cm

COD. Q1HX0131

Art. 20P01H159
C02 Grigio / Grey

Tessuto / Fabric

100% poliestere / polyester
170 g / m²



SCOTLAND

Dettagli / Details

- 1 grande tasca - 1 taschino portapenne
- Allacciatura collo regolabile con bottoni

- 1 big pocket - 1 pen pocket
- Adjustable halter with buttons

Taglie / Sizes

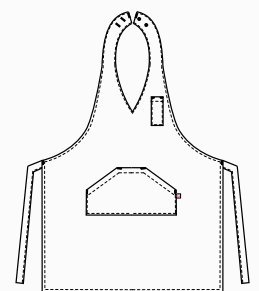
Taglia unica / One size

COD. Q1HX0132

Art. 20P01H2055
C02 Grigio / Grey

Tessuto / Fabric

100% poliestere / polyester
170 g / m²





NAPOLI

Dettagli / Details

- 1 tasca

- 1 pocket

Taglie / Sizes

Taglia unica / One size

Misure / Dimensions

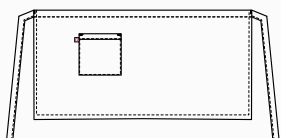
43x70 cm

COD. Q1HX0129

Art. 20P01H147
Z44 Marrone / Brown

Tessuto / Fabric

100% poliestere / polyester
170 g / m²



RENO

Dettagli / Details

- 2 tasche - 1 taschino portapenne
- Allacciatura collo regolabile con bottoni

- 2 pockets - 1 pen pocket
- Adjustable halter with buttons

Taglie / Sizes

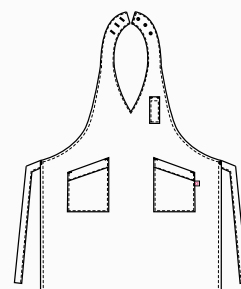
Taglia unica / One size

COD. Q1HX0130

Art. 20P01H158
Z44 Marrone / Brown

Tessuto / Fabric

100% poliestere / polyester
170 g / m²





LIONE

Dettagli / Details

- 1 tasca

- 1 pocket

Taglie / Sizes

Taglia unica / One size

Misure / Dimensions

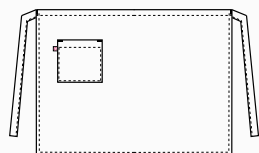
70x98 cm

COD. Q1HX0131

Art. 20P01H159
Z44 Marrone / Brown

Tessuto / Fabric

100% poliestere / polyester
170 g / m²



SCOTLAND

Dettagli / Details

- 1 grande tasca - 1 taschino portapenne
- Allacciatura collo regolabile con bottoni

- 1 big pocket - 1 pen pocket
- Adjustable halter with buttons

Taglie / Sizes

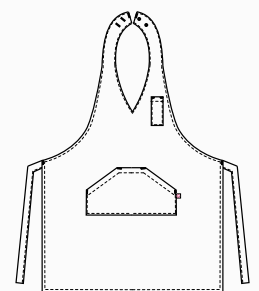
Taglia unica / One size

COD. Q1HX0132

Art. 20P01H2055
Z44 Marrone / Brown

Tessuto / Fabric

100% poliestere / polyester
170 g / m²





NAPOLI

Dettagli / Details

- 1 tasca

- 1 pocket

Taglie / Sizes

Taglia unica / One size

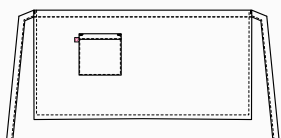
Misure / Dimensions

43x70 cm

COD. Q1HX0275

Art. 23P01H147
U35 Bordeaux / Burgundy

Tessuto / Fabric
100% poliestere / polyester
170 g / m²



RENO

Dettagli / Details

- 2 tasche - 1 taschino portapenne
- Allacciatura collo regolabile con bottoni

- 2 pockets - 1 pen pocket
- Adjustable halter with buttons

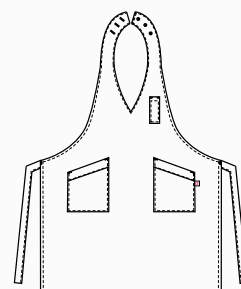
Taglie / Sizes

Taglia unica / One size

COD. Q1HX0272

Art. 23P01H158
U35 Bordeaux / Burgundy

Tessuto / Fabric
100% poliestere / polyester
170 g / m²





LIONE

Dettagli / Details

- 1 tasca

- 1 pocket

Taglie / Sizes

Taglia unica / One size

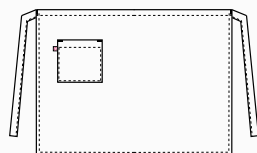
Misure / Dimensions

70x98 cm

COD. Q1HX0273

Art. 23P01H159
U35 Bordeaux / Burgundy

Tessuto / Fabric
100% poliestere / polyester
170 g / m²



SCOTLAND

Dettagli / Details

- 1 grande tasca - 1 taschino portapenne
- Allacciatura collo regolabile con bottoni

- 1 big pocket - 1 pen pocket
- Adjustable halter with buttons

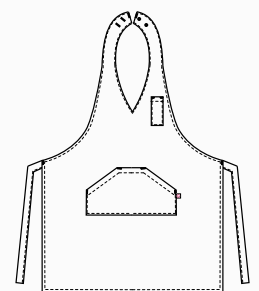
Taglie / Sizes

Taglia unica / One size

COD. Q1HX0274

Art. 23P01H2055
U35 Bordeaux / Burgundy

Tessuto / Fabric
100% poliestere / polyester
170 g / m²





Grembiule
SENA
pag. 59

Grembiule
RODANO
pag. 59



Giblor's
italian worklife specialist



NAPOLI

Dettagli / Details

- 1 tasca

- 1 pocket

Taglie / Sizes

Taglia unica / One size

Misure / Dimensions

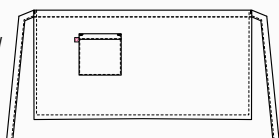
43x70 cm

COD. Q1HX0133

Art. 20P01H423
G12 Gessato grigio / Grey pinstriped

Tessuto / Fabric

99% poliestere 1% viscosa
99% polyester 1% viscose
170 g / m²



RENO

Dettagli / Details

- 2 tasche - 1 taschino portapenne
- Allacciatura collo regolabile con bottoni

- 2 pockets - 1 pen pocket
- Adjustable halter with buttons

Taglie / Sizes

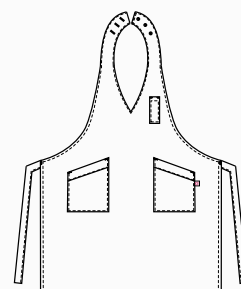
Taglia unica / One size

COD. Q1HX0134

Art. 20P01H152
G12 Gessato grigio / Grey pinstriped

Tessuto / Fabric

99% poliestere 1% viscosa
99% polyester 1% viscose
170 g / m²





SENNA

Dettagli / Details

- 2 tasche
- Allacciatura collo regolabile con bottoni
- 2 pockets
- Adjustable halter with buttons

Taglie / Sizes

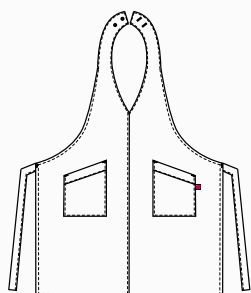
Taglia unica / One size

COD. Q1HX0135

Art. 20P01H153
G12 Gessato grigio / Grey pinstriped

Tessuto / Fabric

99% poliestere 1% viscosa
99% polyester 1% viscose
170 g / m²



RODANO

Dettagli / Details

- 1 tasca
- 1 pocket

Taglie / Sizes

Taglia unica / One size

Misure / Dimensions

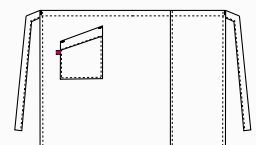
70x98 cm

COD. Q1HX0136

Art. 20P01H154
G12 Gessato grigio / Grey pinstriped

Tessuto / Fabric

99% poliestere 1% viscosa
99% polyester 1% viscose
170 g / m²





NAPOLI

Dettagli / Details

- 1 tasca

- 1 pocket

Taglie / Sizes

Taglia unica / One size

Misure / Dimensions

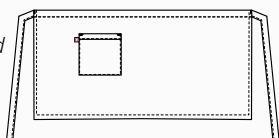
43x70 cm

COD. Q1HX0133

Art. 20P01H423
G32 Gessato nero / Black pinstriped

Tessuto / Fabric

99% poliestere 1% viscosa
99% polyester 1% viscose
170 g / m²



RENO

Dettagli / Details

- 2 tasche - 1 taschino portapenne
- Allacciatura collo regolabile con bottoni

- 2 pockets - 1 pen pocket
- Adjustable halter with buttons

Taglie / Sizes

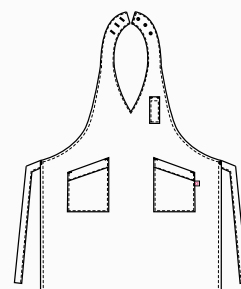
Taglia unica / One size

COD. Q1HX0134

Art. 20P01H152
G32 Gessato nero / Black pinstriped

Tessuto / Fabric

99% poliestere 1% viscosa
99% polyester 1% viscose
170 g / m²





SENNA

Dettagli / Details

- 2 tasche
- Allacciatura collo regolabile con bottoni

- 2 pockets
- Adjustable halter with buttons

Taglie / Sizes

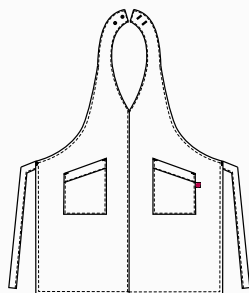
Taglia unica / One size

COD. Q1HX0135

Art. 20P01H153
G32 Gessato nero / Black pinstriped

Tessuto / Fabric

99% poliestere 1% viscosa
99% polyester 1% viscose
170 g / m²



RODANO

Dettagli / Details

- 1 tasca

- 1 pocket

Taglie / Sizes

Taglia unica / One size

Misure / Dimensions

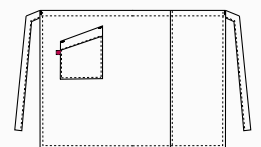
70x98 cm

COD. Q1HX0136

Art. 20P01H154
G32 Gessato nero / Black pinstriped

Tessuto / Fabric

99% poliestere 1% viscosa
99% polyester 1% viscose
170 g / m²





NAPOLI

Dettagli / Details

- 1 tasca

- 1 pocket

Taglie / Sizes

Taglia unica / One size

Misure / Dimensions

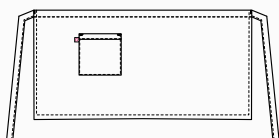
43x70 cm

COD. Q1HX0133

Art. 20P01H423
G35 Gessato bordeaux
G35 Burgundy pinstriped

Tessuto / Fabric

99% poliestere 1% viscosa
99% polyester 1% viscose
170 g / m²



RENO

Dettagli / Details

- 2 tasche - 1 taschino portapenne
- Allacciatura collo regolabile con bottoni

- 2 pockets - 1 pen pocket
- Adjustable halter with buttons

Taglie / Sizes

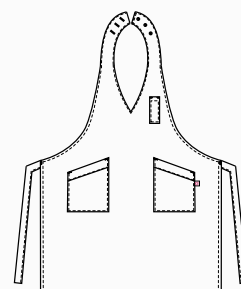
Taglia unica / One size

COD. Q1HX0134

Art. 20P01H152
G35 Gessato bordeaux
G35 Burgundy pinstriped

Tessuto / Fabric

99% poliestere 1% viscosa
99% polyester 1% viscose
170 g / m²





SENNA

Dettagli / Details

- 2 tasche
- Allacciatura collo regolabile con bottoni
- 2 pockets
- Adjustable halter with buttons

Taglie / Sizes

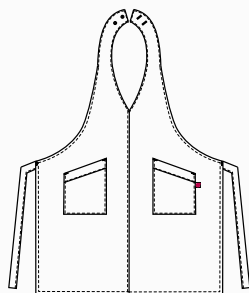
Taglia unica / One size

COD. Q1HX0135

Art. 20P01H153
G35 Gessato bordeaux
G35 Burgundy pinstriped

Tessuto / Fabric

99% poliestere 1% viscosa
99% polyester 1% viscose
170 g / m²



RODANO

Dettagli / Details

- 1 tasca

- 1 pocket

Taglie / Sizes

Taglia unica / One size

Misure / Dimensions

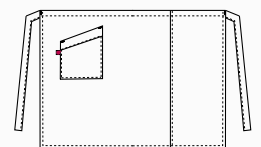
70x98 cm

COD. Q1HX0136

Art. 20P01H154
G35 Gessato bordeaux
G35 Burgundy pinstriped

Tessuto / Fabric

99% poliestere 1% viscosa
99% polyester 1% viscose
170 g / m²





TROPEZ

Dettagli / Details

- 2 tasche - 1 taschino portapenne
- Allacciatura collo regolabile con fibbia
- Inserti in alcantara - Anello porta torcione

- 2 pockets - 1 pen pocket
- Adjustable halter with buckle
- Alcantara inserts - Cloth ring

Taglie / Sizes

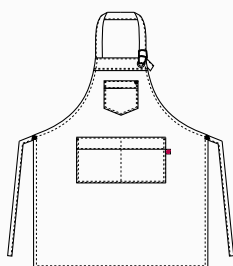
Taglia unica / One size

COD. Q1HX0276

Art. 23P01H149
U35 Bordeaux / Burgundy

Tessuto / Fabric

100% poliestere / polyester
170 g / m²



OMERO

Dettagli / Details

- 1 portapenne

- 1 pen pocket

Taglie / Sizes

Taglia unica / One size

Misure / Dimensions

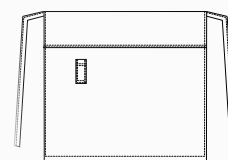
90x90 cm

COD. Q8HX0116

Art. 19P08H108
J32 Jeans nero / Black jeans

Tessuto / Fabric

75% cotone 23% poliestere 2% elastan
75% cotton 23% polyester 2% elastane
210 g / m²





COD. Q1HX0276

Art. 23P01H149
U35 Bordeaux / *Burgundy*



MANCHESTER

Dettagli / Details

- 3 tasche - 1 taschino portapenne
- Allacciatura collo regolabile con vela
- Anello porta torcione

- 3 pockets - 1 pen pocket
- Adjustable halter with ring
- Cloth ring

Taglie / Sizes

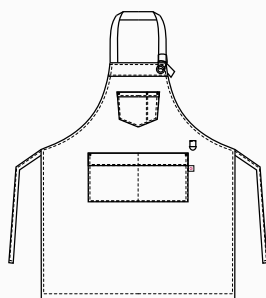
Taglia unica / One size

COD. Q1HX0137

Art. 18P01H019
U32 Nero / Black

Tessuto / Fabric

65% poliestere 35% cotone
65% polyester 35% cotton
200 g / m²



LUNA

Dettagli / Details

- 2 tasche - 1 taschino portapenne
- Allacciatura collo regolabile con velcro

- 2 pockets
- 1 pen pocket
- Adjustable halter with velcro

Taglie / Sizes

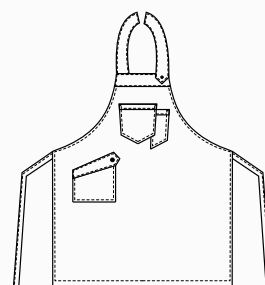
Taglia unica / One size

COD. Q1HX0138

Art. 18P01H020
U32 Nero / Black

Tessuto / Fabric

65% poliestere 35% cotone
65% polyester 35% cotton
200 g / m²





DOUGLAS

Dettagli / Details

- 1 tasca
- 4 taschini portapenne
- Allacciatura collo regolabile con fibbia

- 1 pocket
- 4 pen pockets
- Adjustable halter with buckle

Taglie / Sizes

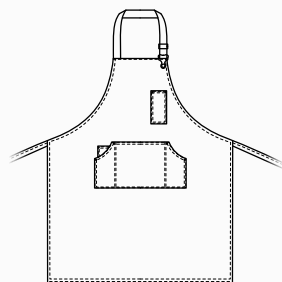
Taglia unica / One size

COD. Q1HX0141

Art. 18P01H013
J48 Jeans blu / Blue jeans

Tessuto / Fabric

100% cotone
100% cotton
260 g / m²



SHANNON

Dettagli / Details

- 1 tasca
- 3 taschini portapenne

- 1 pocket
- 3 pen pockets

Taglie / Sizes

Taglia unica / One size

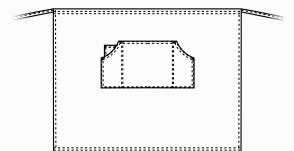
Misure / Dimensions 70x80 cm

COD. Q1HX0142

Art. 18P01H014
J48 Jeans blu / Blue jeans

Tessuto / Fabric

100% cotone
100% cotton
260 g / m²



CALIFORNIA

Dettagli / Details

- 2 tasche
- 2 taschini portapenne
- Allacciatura collo regolabile con fibbia
- Laccio collo removibile

- 2 pockets
- 2 pen pockets
- Adjustable halter with buckle
- Removable necklace

Taglie / Sizes

Taglia unica / One size

COD. Q1HX0139

Art. 19P01H072

J48 Jeans blu / Blue jeans

Tessuto 1 / Fabric 1

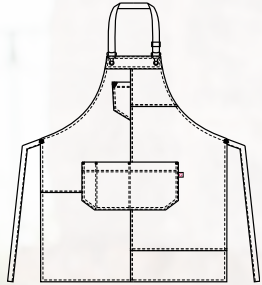
100% cotone
100% cotton
260 g / m²

Tessuto 2 / Fabric 2

100% poliestere
100% polyester
160 g / m²

Tessuto 3 / Fabric 3

92% poliestere 8% elastan
92% polyester 8% elastane
247 g / m²



KANSAS

Dettagli / Details

- 2 tasche
- Allacciatura collo regolabile con fibbia
- Laccio collo removibile

- 2 pockets
- Adjustable halter with buckle
- Removable necklace

Taglie / Sizes

Taglia unica / One size

COD. Q1HX0140

Art. 19P01H073
J48 Jeans blu / Blue jeans

Tessuto 1 / Fabric 1

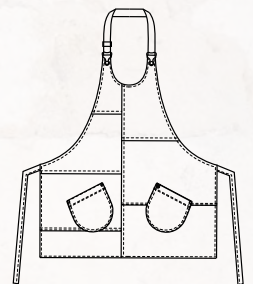
100% cotone
100% cotton
260 g / m²

Tessuto 2 / Fabric 2

100% poliestere
100% polyester
160 g / m²

Tessuto 3 / Fabric 3

92% poliestere 8% elasthan
92% polyester 8% elastane
247 g / m²



NIZZA

Dettagli / Details

- 2 tasche
- 1 taschino portapenne
- Allacciatura collo regolabile
- Anello porta torcione

- 2 pockets
- 1 pen pocket
- Adjustable halter
- Cloth ring

Taglie / Sizes

Taglia unica / One size

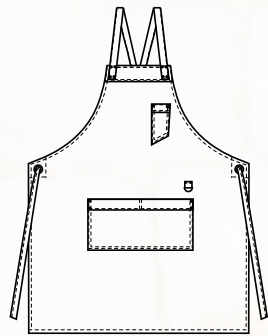
COD. Q1HX0143

Art. 19P01H071

J32 Jeans nero / Black jeans

Tessuto / Fabric

75% cotone 23% poliestere 2% elasthan
75% cotton 23% polyester 2% elastane
210 g / m²



COMFORT

LUNA

Dettagli / Details

- 1 tasca
- 1 ampia tasca centrale
- Allacciatura collo regolabile con velcro
- 1 pocket
- 1 big central pocket
- Adjustable halter with velcro

Taglie / Sizes

Taglia unica / One size

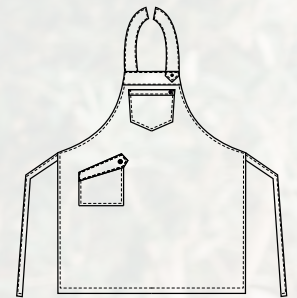
COD. Q1HX0144

Art. 19P01H069

J32 Jeans nero / Black jeans

Tessuto / Fabric

75% cotone 23% poliestere 2% elasthan
75% cotton 23% polyester 2% elastane
210 g / m²



COMFORT



CHICAGO

Dettagli / Details

- 4 grandi tasche
- Allacciatura collo regolabile con fibbia

- 4 big pockets
- Adjustable halter with buckle

Taglie / Sizes

Taglia unica / One size

COD. Q1HX0281

Art. 23P01H370

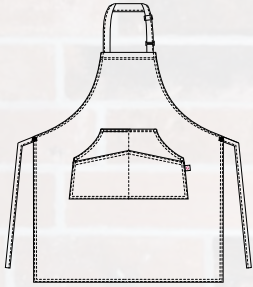
J48 Jeans blu / Blue jeans

Tessuto / Fabric

98% cotone 2% elasthan

98% cotton 2% elastane

200 g / m²



COMFORT



VIRGINIA

Dettagli / Details

- 2 tasche
- Allacciatura collo regolabile con fibbia

- 2 pockets
- Adjustable halter with buckle

Taglie / Sizes

Taglia unica / One size

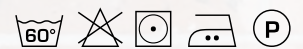
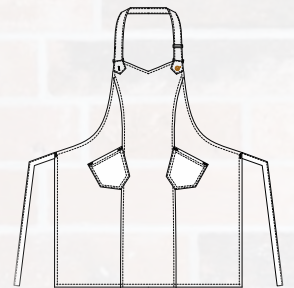
COD. Q1HX0282

Art. 23P01H369

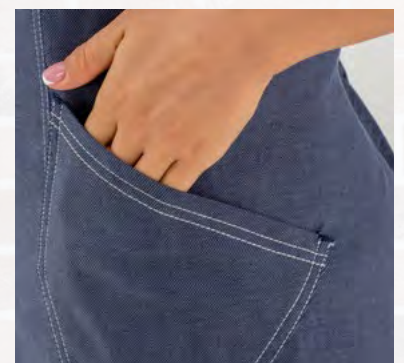
J48 Jeans blu / Blue jeans

Tessuto / Fabric

98% cotone 2% elasthan
98% cotton 2% elastane
200 g / m²



COMFORT



DOUGLAS

Dettagli / Details

- 1 tasca
- 4 taschini portapenne
- Allacciatura collo regolabile con fibbia

- 1 pocket
- 4 pen pockets
- Adjustable halter with buckle

Taglie / Sizes

Taglia unica / One size

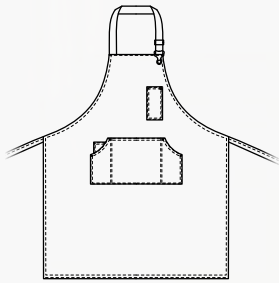
COD. Q1HX0279

Art. 23P01H374

S18 Scozzese azzurro / Scottish blue

Tessuto / Fabric

98% cotone 2% elastan
98% cotton 2% elastane
200 g / m²



COD. Q1HX0279

Art. 23P01H374
S18 Scozzese azzurro / Scottish blue

ACCESSORI COORDINABILI
MATCHING ACCESSORIES
pag. 101

DOUGLAS

Dettagli / Details

- 1 tasca
- 4 taschini portapenne
- Allacciatura collo regolabile con fibbia

- 1 pocket

- 4 pen pockets

- Adjustable halter with buckle

Taglie / Sizes

Taglia unica / One size

COD. Q1HX0279

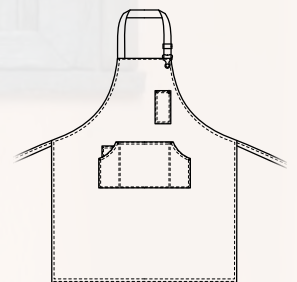
Art. 23P01H374
S44 Scozzese marrone / Scottish brown

COD. Q1HX0278

Art. 23P01H371
Z41 Tortora / Taupe

Tessuto / Fabric

98% cotone 2% elasthan
98% cotton 2% elastane
200 g / m²



COMFORT



COD. Q1HX0279

Art. 23P01H374
S44 Scozzese marrone / Scottish brown

ACCESSORI COORDINABILI
MATCHING ACCESSORIES

pag. 101

COMFORT



COD. Q1HX0278

Art. 23P01H371
Z41 Tortora / Taupe

VIRGINIA

Dettagli / Details

- 2 tasche
- Allacciatura collo regolabile con fibbia

- 2 pockets
- Adjustable halter with buckle

COD. Q1H00267

C02 Grigio chiaro / Light grey

U32 Nero / Black

U35 Bordeaux / Burgundy

Z41 Tortora / Taupe

Z43 Militare / Military green

Z44 Marrone / Brown

Z48 Blu / Blue

Taglie / Sizes

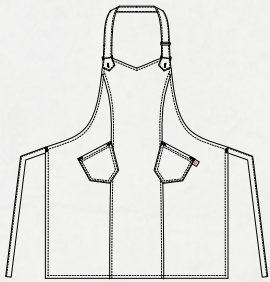
Taglia unica / One size

Tessuto / Fabric

65% poliestere 35% cotone

65% polyester 35% cotton

200 g / m²



COD. Q1H00267

C02 Grigio chiaro / Light Grey



COD. Q1H00267

C02 Grigio chiaro / *Light Grey*



COD. Q1H00267

U32 Nero / *Black*



COD. Q1H00267

U35 Bordeaux / *Burgundy*



COD. Q1H00267

Z41 Tortora / *Taupe*



COD. Q1H00267

Z43 Verde militare / *Military green*



COD. Q1H00267

Z44 Marrone / *Brown*



COD. Q1H00267

Z48 Blu / *Blue*

ZANTE

Dettagli / Details

- 2 grandi tasche
- Allacciatura collo regolabile con fibbia

- 2 big pockets
- Adjustable halter with buckle

Taglie / Sizes

Taglia unica / One size

Misure / Dimensions

66x92 cm

COD. Q1H00212

C02 Grigio chiaro / Light grey

U32 Nero / Black

U35 Bordeaux / Burgundy

Z41 Tortora / Taupe

Z43 Militare / Military green

Z44 Marrone / Brown

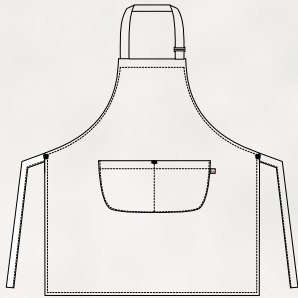
Z48 Blu / Blue

Tessuto / Fabric

65% poliestere 35% cotone

65% polyester 35% cotton

200 g / m²



COD. Q1H00212

U32 Nero / Black



COD. Q1H00212

C02 Grigio chiaro / Light grey



COD. Q1H00212

U32 Nero / Black



COD. Q1H00212

U35 Bordeaux / Burgundy



COD. Q1H00212

Z41 Tortora / Taupe



COD. Q1H00212

Z43 Militare / Military green



COD. Q1H00212

Z44 Marrone / Brown



COD. Q1H00212

Z48 Blu / Blue

ho.re.ca. & services

Grembiuli

Aprons

MATERA

Dettagli / Details

- 1 tasca
- 1 pocket

Taglie / Sizes

Taglia unica / One size

Misure / Dimensions

75x105 cm

COD. Q1H00213

C02 Grigio chiaro / Light grey

U32 Nero / Black

U35 Bordeaux / Burgundy

Z41 Tortora / Taupe

Z43 Militare / Military green

Z44 Marrone / Brown

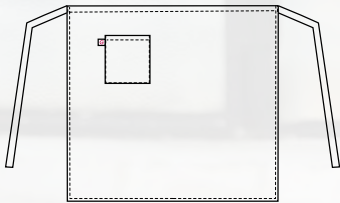
Z48 Blu / Blue

Tessuto / Fabric

65% poliestere 35% cotone

65% polyester 35% cotton

200 g / m²



COD. Q1H00213

Z48 Blu / Blue



COD. Q1H00213

C02 Grigio chiaro / Light grey



COD. Q1H00213

U32 Nero / Black



COD. Q1H00213

U35 Bordeaux / Burgundy



COD. Q1H00213

Z41 Tortora / Taupe



COD. Q1H00213

Z43 Militare / Military green



COD. Q1H00213

Z44 Marrone / Brown



COD. Q1H00213

Z48 Blu / Blue

BARI

Dettagli / Details

- 1 tasca
- 1 pocket

Taglie / Sizes

Taglia unica / One size

Misure / Dimensions

45x80 cm

COD. Q1H00214

C02 Grigio chiaro / Light grey

U32 Nero / Black

U35 Bordeaux / Burgundy

Z41 Tortora / Taupe

Z43 Militare / Military green

Z44 Marrone / Brown

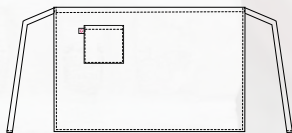
Z48 Blu / Blue

Tessuto / Fabric

65% poliestere 35% cotone

65% polyester 35% cotton

200 g / m²



COD. Q1H00214

U35 Bordeaux / Burgundy



COD. Q1H00214

C02 Grigio chiaro / Light grey



COD. Q1H00214

U32 Nero / Black



COD. Q1H00214

U35 Bordeaux / Burgundy



COD. Q1H00214

Z41 Tortora / Taupe



COD. Q1H00214

Z43 Militare / Military green



COD. Q1H00214

Z44 Marrone / Brown



COD. Q1H00214

Z48 Blu / Blue

LIPARI

Dettagli / Details

- 1 grande tasca
- 2 taschini portapenne
- Allacciatura collo regolabile con bottoni

- 1 big pocket
- 2 pen pockets
- Adjustable halter with buttons

Taglie / Sizes

Taglia unica / One size

Misure / Dimensions

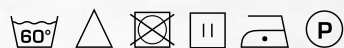
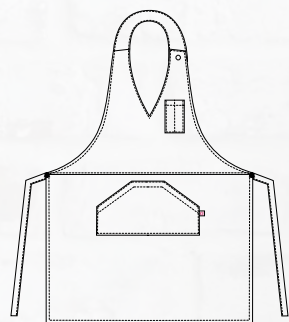
68x88 cm

COD. Q1H00207

U32 Nero / Black
D22 Antracite / Anthracite
Z44 Marrone / Brown
U33 Caffè / Coffee
U35 Bordeaux / Burgundy
Z46 Fucsia / Fuchsia
D25 Rosso / Red
D24 Arancio / Orange
C03 Giallo / Yellow
C09 Pistacchio / Pistachio
Z49 Verde scuro / Dark green
Z48 Blu / Blue
U38 Bluette / Royal
D28 Turchese / Turquoise

Tessuto / Fabric

100% poliestere
100% polyester
220 g / m²



COD. Q1H00207

U33 Caffè / Coffee



COD. Q1H00207

U32 Nero / Black



COD. Q1H00207

D22 Antracite / Anthracite



COD. Q1H00207

Z44 Marrone / Brown



COD. Q1H00207

U33 Caffè / Coffee



COD. Q1H00207

U35 Bordeaux / Burgundy



COD. Q1H00207

Z46 Fucsia / Fuchsia



COD. Q1H00207

D25 Rosso / Red



COD. Q1H00207

D24 Arancio / Orange



COD. Q1H00207

C03 Giallo / Yellow



COD. Q1H00207

C09 Pistacchio / Pistachio



COD. Q1H00207

Z49 Verde scuro / Dark green



COD. Q1H00207

Z48 Blu / Blue



COD. Q1H00207

U38 Bluette / Royal



COD. Q1H00207

D28 Turchese / Turquoise



COD. Q1H00210

U32 Nero / Black



COD. Q1H00210

D22 Antracite / Anthracite



COD. Q1H00210

Z44 Marrone / Brown



COD. Q1H00210

U33 Caffè / Coffee



COD. Q1H00210

U35 Bordeaux / Burgundy



COD. Q1H00210

Z46 Fucsia / Fuchsia



COD. Q1H00210

D25 Rosso / Red



COD. Q1H00210

D24 Arancio / Orange



COD. Q1H00210

C03 Giallo / Yellow



COD. Q1H00210

C09 Pistacchio / Pistachio



COD. Q1H00210

Z49 Verde scuro / Dark green



COD. Q1H00210

Z48 Blu / Blue



COD. Q1H00210

U38 Bluette / Royal



COD. Q1H00210

D28 Turchese / Turquoise

POSITANO

Dettagli / Details

- 2 tasche

- 2 pockets

Taglie / Sizes

Taglia unica / One size

Misure / Dimensions

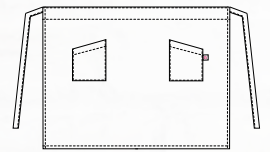
68x59 cm

COD. Q1H00210

U32 Nero / Black
D22 Antracite / Anthracite
Z44 Marrone / Brown
U33 Caffè / Coffee
U35 Bordeaux / Burgundy
Z46 Fucsia / Fuchsia
D25 Rosso / Red
D24 Arancio / Orange
C03 Giallo / Yellow
C09 Pistacchio / Pistachio
Z49 Verde scuro / Dark green
Z48 Blu / Blue
U38 Bluette / Royal
D28 Turchese / Turquoise

Tessuto / Fabric

100% poliestere
100% polyester
220 g / m²



COD. Q1H00210

U32 Nero / Black



ho.re.ca. & services

Grembiuli

Aprons

PUB

Dettagli / Details

- 3 grandi tasche

- 3 big pockets

Taglie / Sizes

Taglia unica / One size

Misure / Dimensions

51x32 cm

COD. Q1H00211

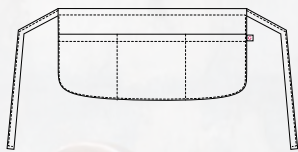
U32 Nero / Black
D22 Antracite / Anthracite
Z44 Marrone / Brown
U33 Caffè / Coffee
U35 Bordeaux / Burgundy
Z46 Fucsia / Fuchsia
D25 Rosso / Red
D24 Arancio / Orange
C03 Giallo / Yellow
C09 Pistacchio / Pistachio
Z49 Verde scuro / Dark green
Z48 Blu / Blue
U38 Bluette / Royal
D28 Turchese / Turquoise

Tessuto / Fabric

100% poliestere

100% polyester

220 g / m²



COD. Q1H00211

U32 Nero / Black



COD. Q1H00211

U32 Nero / Black



COD. Q1H00211

D22 Antracite / Anthracite



COD. Q1H00211

Z44 Marrone / Brown



COD. Q1H00211

U33 Caffè / Coffee



COD. Q1H00211

U35 Bordeaux / Burgundy



COD. Q1H00211

Z46 Fucsia / Fuchsia



COD. Q1H00211

D25 Rosso / Red



COD. Q1H00211

D24 Arancio / Orange



COD. Q1H00211

C03 Giallo / Yellow



COD. Q1H00211

C09 Pistacchio / Pistachio



COD. Q1H00211

Z49 Verde scuro / Dark green



COD. Q1H00211

Z48 Blu / Blue



COD. Q1H00211

U38 Bluette / Royal



COD. Q1H00211

D28 Turchese / Turquoise

CAPRI

Dettagli / Details

- 2 taschini portapenne
- 2 tasche
- Allacciatura collo regolabile con bottoni

- 2 pen pockets
- 2 pockets
- Adjustable halter with buttons

Taglie / Sizes

Taglia unica / One size

Misure / Dimensions

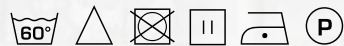
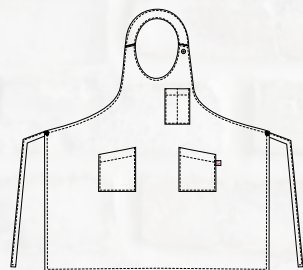
81x122,5 cm

COD. Q1H00208

U32 Nero / Black
D22 Antracite / Anthracite
Z44 Marrone / Brown
U33 Caffè / Coffee
U35 Bordeaux / Burgundy
Z46 Fucsia / Fuchsia
D25 Rosso / Red
D24 Arancio / Orange
C03 Giallo / Yellow
C09 Pistacchio / Pistachio
Z49 Verde scuro / Dark green
Z48 Blu / Blue
U38 Bluette / Royal
D28 Turchese / Turquoise

Tessuto / Fabric

100% poliestere
100% polyester
220 g / m²



COD. Q1H00208

U35 Bordeaux / Burgundy



COD. Q1H00208

U32 Nero / Black



COD. Q1H00208

D22 Antracite / Anthracite



COD. Q1H00208

Z44 Marrone / Brown



COD. Q1H00208

U33 Caffè / Coffee



COD. Q1H00208

U35 Bordeaux / Burgundy



COD. Q1H00208

Z46 Fucsia / Fuchsia



COD. Q1H00208

D25 Rosso / Red



COD. Q1H00208

D24 Arancio / Orange



COD. Q1H00208

C03 Giallo / Yellow



COD. Q1H00208

C09 Pistacchio / Pistachio



COD. Q1H00208

Z49 Verde scuro / Dark green



COD. Q1H00208

Z48 Blu / Blue



COD. Q1H00208

U38 Bluette / Royal



COD. Q1H00208

D28 Turchese / Turquoise

LATINA

Dettagli / Details

- 1 taschino portapenne
- 1 grande tasca
- Allacciatura collo regolabile con bottoni

- 1 pen pocket
- 1 big pocket
- Adjustable halter with buttons

Taglie / Sizes

Taglia unica / One size

Misure / Dimensions

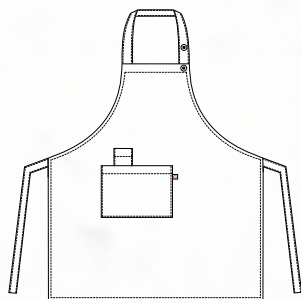
81x122,5 cm

COD. Q1H00209

U32 Nero / Black
D22 Antracite / Anthracite
Z44 Marrone / Brown
U33 Caffè / Coffee
U35 Bordeaux / Burgundy
Z46 Fucsia / Fuchsia
D25 Rosso / Red
D24 Arancio / Orange
C03 Giallo / Yellow
C09 Pistacchio / Pistachio
Z49 Verde scuro / Dark green
Z48 Blu / Blue
U38 Bluette / Royal
D28 Turchese / Turquoise

Tessuto / Fabric

100% poliestere
100% polyester
220 g / m²



COD. Q1H00209

D25 Rosso / Red



COD. Q1H00209

U32 Nero / Black



COD. Q1H00209

D22 Antracite / Anthracite



COD. Q1H00209

Z44 Marrone / Brown



COD. Q1H00209

U33 Caffè / Coffee



COD. Q1H00209

U35 Bordeaux / Burgundy



COD. Q1H00209

Z46 Fucsia / Fuchsia



COD. Q1H00209

D25 Rosso / Red



COD. Q1H00209

D24 Arancio / Orange



COD. Q1H00209

C03 Giallo / Yellow



COD. Q1H00209

C09 Pistacchio / Pistachio



COD. Q1H00209

Z49 Verde scuro / Dark green



COD. Q1H00209

Z48 Blu / Blue



COD. Q1H00209

U38 Bluette / Royal



COD. Q1H00209

D28 Turchese / Turquoise

GIOIA

Dettagli / Details

- Scamciato
- 1 grande tasca
- Coperto dietro

- Pinafore
- 1 big pocket
- Covered backside

Taglie / Sizes

Taglia unica / One size

Misure / Dimensions

83,5x84 cm

COD. Q2H00218

U32 Nero / Black
D22 Antracite / Anthracite
Z44 Marrone / Brown
U33 Caffè / Coffee
U35 Bordeaux / Burgundy
Z46 Fucsia / Fuchsia
D25 Rosso / Red
D24 Arancio / Orange
C03 Giallo / Yellow
C09 Pistacchio / Pistachio
Z49 Verde scuro / Dark green
Z48 Blu / Blue
U38 Bluette / Royal
D28 Turchese / Turquoise

Tessuto / Fabric

100% poliestere
100% polyester
220 g / m²



COD. Q2H00218

U33 Caffè / Coffee



COD. Q2H00218

U32 Nero / Black



COD. Q2H00218

D22 Antracite / Anthracite



COD. Q2H00218

Z44 Marrone / Brown



COD. Q2H00218

U33 Caffè / Coffee



COD. Q2H00218

U35 Bordeaux / Burgundy



COD. Q2H00218

Z46 Fucsia / Fuchsia



COD. Q2H00218

D25 Rosso / Red



COD. Q2H00218

D24 Arancio / Orange



COD. Q2H00218

C03 Giallo / Yellow



COD. Q2H00218

C09 Pistacchio / Pistachio



COD. Q2H00218

Z49 Verde scuro / Dark green



COD. Q2H00218

Z48 Blu / Blue



COD. Q2H00218

U38 Bluette / Royal



COD. Q2H00218

D28 Turchese / Turquoise



COD. Q5100215

U32 Nero / Black

COD. Q5100215

D22 Antracite / Anthracite

COD. Q5100215

Z44 Marrone / Brown

COD. Q5100215

U33 Caffè / Coffee

COD. Q5100215

U35 Bordeaux / Burgundy



COD. Q5100215

Z46 Fucsia / Fuchsia

COD. Q5100215

D25 Rosso / Red

COD. Q5100215

D24 Arancio / Orange

COD. Q5100215

C03 Giallo / Yellow



COD. Q5100215

C09 Pistacchio / Pistachio

COD. Q5100215

Z49 Verde scuro / Dark green

COD. Q5100215

Z48 Blu / Blue

COD. Q5100215

U38 Bluette / Royal

COD. Q5100215

D28 Turchese / Turquoise

JERRY

Dettagli / Details

- Regolabile con elastico
- Adjustable with elastic band

Taglie / Sizes

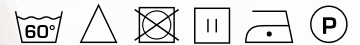
Taglia unica / One size

COD. Q5100215

U32 Nero / Black
D22 Antracite / Anthracite
Z44 Marrone / Brown
U33 Caffè / Coffee
U35 Bordeaux / Burgundy
Z46 Fucsia / Fuchsia
D25 Rosso / Red
D24 Arancio / Orange
C03 Giallo / Yellow
C09 Pistacchio / Pistachio
Z49 Verde scuro / Dark green
Z48 Blu / Blue
U38 Bluette / Royal
D28 Turchese / Turquoise

Tessuto / Fabric

100% poliestere
100% polyester
220 g / m²



COD. Q5100215

D25 Rosso / Red



COD. Q5100216

U32 Nero / Black

COD. Q5100216

D22 Antracite / Anthracite

COD. Q5100216

Z44 Marrone / Brown

COD. Q5100216

U33 Caffè / Coffee

COD. Q5100216

U35 Bordeaux / Burgundy



COD. Q5100216

Z46 Fucsia / Fuchsia

COD. Q5100216

D25 Rosso / Red

COD. Q5100216

D24 Arancio / Orange

COD. Q5100216

C03 Giallo / Yellow



COD. Q5100216

C09 Pistacchio / Pistachio

COD. Q5100216

Z49 Verde scuro / Dark green

COD. Q5100216

Z48 Blu / Blue

COD. Q5100216

U38 Bluette / Royal

COD. Q5100216

D28 Turchese / Turquoise

PANAREA

Dettagli / Details

- Regolabile con elastico
- Adjustable with elastic band

Taglie / Sizes

Taglia unica / One size

COD. Q5100216

- U32 Nero / Black
- D22 Antracite / Anthracite
- Z44 Marrone / Brown
- U33 Caffè / Coffee
- U35 Bordeaux / Burgundy
- Z46 Fucsia / Fuchsia
- D25 Rosso / Red
- D24 Arancio / Orange
- C03 Giallo / Yellow
- C09 Pistacchio / Pistachio
- Z49 Verde scuro / Dark green
- Z48 Blu / Blue
- U38 Bluette / Royal
- D28 Turchese / Turquoise

Tessuto / Fabric

100% poliestere
100% polyester
220 g / m²



COD. Q5100216

Z44 Marrone / Brown

PAPILLON

Taglie / Sizes

Taglia unica / One size

COD. Q5IX0234

Art. 409
U32 Nero / Black

CRAVATTA UNISEX

Taglie / Sizes

Taglia unica / One size

COD. Q5IX0235

Art. 511
U32 Nero / Black

CRAVATTA DONNA

Taglie / Sizes

Taglia unica / One size

COD. Q5IX0182

Art. 19P051871
U32 Nero / Black



COD. Q5IX0234

Art. 409
U32 Nero / Black
100% poliestere / polyester
220 g / m²



COD. Q5IX0235

Art. 511
U32 Nero / Black
100% poliestere / polyester
220 g / m²



COD. Q5IX0182

Art. 19P051871
U32 Nero / Black
100% poliestere / polyester
220 g / m²



TOMMY

Dettagli / Details

- Regolabile con velcro
- Adjustable with velcro

Taglie / Sizes

Taglia unica / One size



COD. Q5IX0269

Art. 23P05I375
J48 Jeans blu / Blue jeans



COD. Q5IX0269

Art. 23P05I375
Z41 Tortora / Taupe



COD. Q5IX0269

Art. 23P05I375
J48 Jeans blu / Blue jeans
Z41 Tortora / Taupe

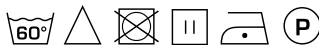
Tessuto / Fabric

98% cotone 2% elastan
98% cotton 2% elastane
200 g / m²



COD. Q5IX0145

Art. 20P05I2058
C02 Grigio / Grey



COD. Q5IX0145

Art. 20P05I2058
D21 Beige / Beige



COD. Q5IX0145

Art. 20P05I2058
C02 Grigio / Grey
D21 Beige / Beige
Z44 Marrone / Brown

Tessuto / Fabric

100% poliestere
100% polyester
170 g / m²



COD. Q5IX0145

Art. 20P05I2058
Z44 Marrone / Brown



COD. Q5IX0277

Art. 23P05I2058
U35 Bordeaux / Burgundy



COD. Q5IX0277

Art. 23P05I2058
U35 Bordeaux / Burgundy

Tessuto / Fabric

100% poliestere
100% polyester
170 g / m²

COPPOLA

Dettagli / Details

- Regolabile con elastico
- Adjustable with elastic

Taglie / Sizes

Taglia unica / One size



COD. Q5IX0146

Art. 19P05I132
J32 Jeans nero / Black jeans



COD. Q5IX0147

Art. 18P05I060
J48 Jeans blu / Blue jeans



COD. Q5IX0146

Art. 19P05I132
J32 Jeans nero / Black jeans

Tessuto / Fabric

75% cotone 23% poliestere 2% elastan
75% cotton 23% polyester 2% elastane
210 g / m²

COD. Q5IX0147

Art. 18P05I060
J48 Jeans blu / Jeans blue

Tessuto / Fabric

100% cotone
100% cotton
260 g / m²



Giacca
ELIO
pag. 105



Giblor's
italian worklife specialist

Giacca
DANA
pag. 104

DANA

Dettagli / Details

- Sfiancata
- Sfoderata
- 2 bottoni

- *Tight waisted*
- *Unlined*
- *2 buttons*

Taglie / Sizes

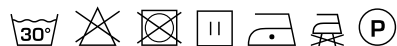
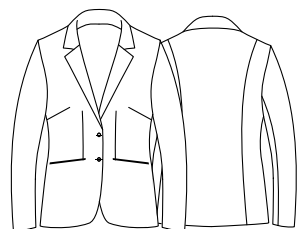
XS ÷ 3XL Slim Fit

COD. Q1CX0148

Art. 17P01C901
U32 Nero / Black

Tessuto / Fabric

95% poliestere 5% elastan
95% polyester 5% elastane
220 g / m²



LAYLA

Dettagli / Details

- Fondo stretto
- 2 tasche

- *Slim leg*
- *2 pockets*

Taglie / Sizes

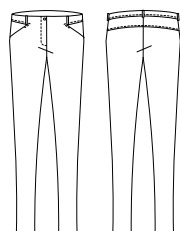
XS ÷ 3XL Slim Fit

COD. Q1CX0150

Art. 17P01P903
U32 Nero / Black

Tessuto / Fabric

95% poliestere 5% elastan
95% polyester 5% elastane
220 g / m²





ELIO



Dettagli / Details

- Sfoderata
- 2 bottoni

- Unlined
- 2 buttons

Taglie / Sizes

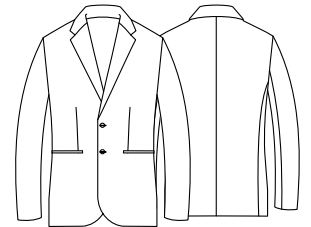
44 ÷ 58 Slim Fit

COD. Q1CX0152

Art. 17P01C966
U32 Nero / Black

Tessuto / Fabric

95% poliestere 5% elasthan
95% polyester 5% elastane
220 g / m²



GIOVANNI



Dettagli / Details

- Sfoderato - Fondo stretto
- 2 tasche alla francese
- 2 taschine posteriori
- Vita bassa

- Unlined - Slim leg
- 2 side pockets
- 2 rear pockets
- Low waist

Taglie / Sizes

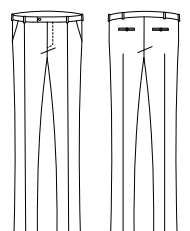
42 ÷ 58 Slim Fit

COD. Q1PX0154

Art. 17P01P546
U32 Nero / Black

Tessuto / Fabric

95% poliestere 5% elasthan
95% polyester 5% elastane
220 g / m²



DANA

Dettagli / Details

- Sfiancata
- Sfoderata
- 2 bottoni

- *Tight waisted*
- *Unlined*
- *2 buttons*

Taglie / Sizes

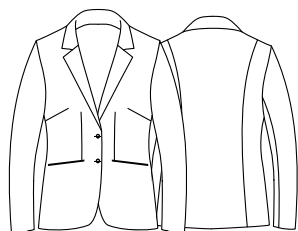
XS ÷ 3XL Slim Fit

COD. Q1CX0149

Art. 20P01C901
Z48 Blu / Blue

Tessuto / Fabric

95% poliestere 5% elasthan
95% polyester 5% elastane
220 g / m²



LAYLA

Dettagli / Details

- Fondo stretto
- 2 tasche

- *Slim leg*
- *2 pockets*

Taglie / Sizes

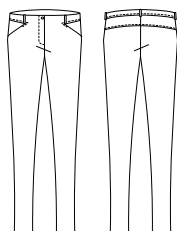
XS ÷ 3XL Slim Fit

COD. Q1CX0151

Art. 20P01P903
Z48 Blu / Blue

Tessuto / Fabric

95% poliestere 5% elasthan
95% polyester 5% elastane
220 g / m²





ELIO

Dettagli / Details

- Sfoderata
- 2 bottoni

- Unlined
- 2 buttons

Taglie / Sizes

44 ÷ 58 Slim Fit

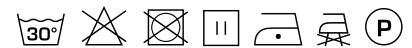
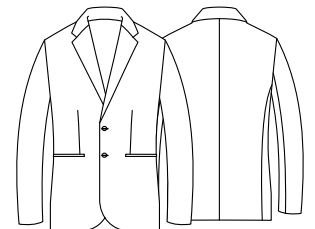


COD. Q1CX0153

Art. 20P01C966
Z48 Blu / Blue

Tessuto / Fabric

95% poliestere 5% elasthan
95% polyester 5% elastane
220 g / m²



GIOVANNI

Dettagli / Details

- Sfoderato - Fondo stretto
- 2 tasche alla francese
- 2 taschine posteriori
- Vita bassa

- Unlined - Slim leg
- 2 side pockets
- 2 rear pockets
- Low waist

Taglie / Sizes

42 ÷ 58 Slim Fit

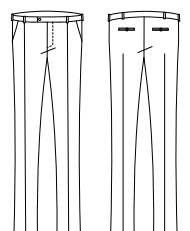


COD. Q1PX0155

Art. 20P01P546
Z48 Blu / Blue

Tessuto / Fabric

95% poliestere 5% elasthan
95% polyester 5% elastane
220 g / m²



MIGUEL

Dettagli / Details

- Foderato
- 2 tasche
- 4 bottoni
- Fascette regolabili

- Lined
- 2 pockets
- 4 buttons
- Adjustable buckle

Taglie / Sizes

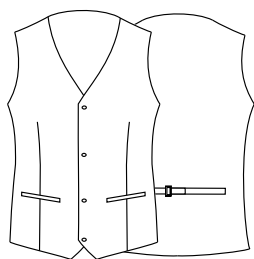
XS ÷ 3XL Regular Fit

COD. Q1EX0158

Art. 106/E
U32 Nero / Black

Tessuto / Fabric

100% poliestere
100% polyester
160 g / m²



COD. Q1EX0160

Art. 106BX
U35 Bordeaux / Burgundy

100% poliestere / polyester
220 g / m²



COD. Q1EX0159

Art. 106
Z48 Blu / Blue

100% poliestere / polyester
160 g / m²



ROSITA

Dettagli / Details

- Sfoderato
- 2 tasche
- 4 bottoni
- Fascette regolabili

- Unlined
- 2 pockets
- 4 buttons
- Adjustable buckle

Taglie / Sizes

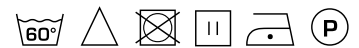
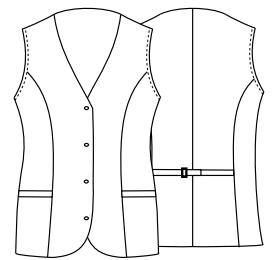
XS ÷ XXL Regular Fit

COD. Q1EX0161

Art. 270/E
U32 Nero / Black

Tessuto / Fabric

100% poliestere
100% polyester
160 g / m²



COD. Q1EX0163

Art. 270BX
U35 Bordeaux / Burgundy

100% poliestere / polyester
220 g / m²



COD. Q1EX0162

Art. 270
Z48 Blu / Blue

100% poliestere / polyester
160 g / m²



MATTEO

Dettagli / Details

- Sfoderato
- 2 tasche alla francese
- 2 taschine posteriori
- Fondo stretto

- Unlined
- 2 side pockets
- 2 rear pockets
- Slim leg

Taglie / Sizes

40 ÷ 64 Slim Fit

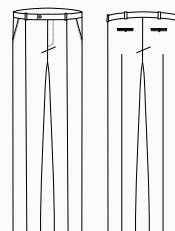
COD. Q1PX0156

Art. 90
U32 Nero / Black

COD. Q1PX0157

Art. 90/B
Z48 Blu / Blue

Tessuto / Fabric
100% poliestere
100% polyester
160 g / m²



Giblor's
italian work/life specialist



Gilet
ROSITA
pag. 109

Camicia
AURORA
pag. 115

NOVAK

Dettagli / Details

- Collo coreano
- Polsino regolabile

- Mandarin collar
- Adjustable cuff

Taglie / Sizes

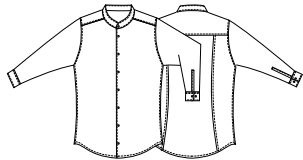
S ÷ 4XL Slim Fit

COD. Q1NX0164

Art. 19P01N085
C01 Bianco / White
U32 Nero / Black

Tessuto / Fabric

65% poliestere 35% cotone
65% polyester 35% cotton
110 g / m²



COD. Q1NX0164

Art. 19P01N085
U32 Nero / Black



VENUS

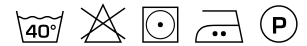
Dettagli / Details
- Collo coreano
- Mandarin collar

Taglie / Sizes
XS ÷ 4XL Regular Fit

COD. Q1NX0165

Art. 19P01N086
C01 Bianco / White
U32 Nero / Black

Tessuto / Fabric
65% poliestere 35% cotone
65% polyester 35% cotton
110 g / m²



COD. Q1NX0165

Art. 19P01N086
C01 Bianco / White



PRINCE

Dettagli / Details

- Collo classico
- Polsino regolabile

- Classic collar
- Adjustable cuff

Taglie / Sizes

XS ÷ 5XL Slim Fit

COD. Q1NX0166

Art. 11P01056
C01 Bianco / White
U32 Nero / Black

Tessuto / Fabric

65% poliestere 35% cotone
65% polyester 35% cotton
110 g / m²



COD. Q1NX0166

Art. 11P01056
U32 Nero / Black





AURORA

Dettagli / Details

- Collo classico

- Classic collar

Taglie / Sizes

XS ÷ 3XL Regular Fit

COD. Q1NX0167

Art. 1600
C01 Bianco / White

Tessuto / Fabric

65% poliestere 35% cotone
65% polyester 35% cotton
110 g / m²



FARA

Dettagli / Details

- Collo classico

- Classic collar

Taglie / Sizes

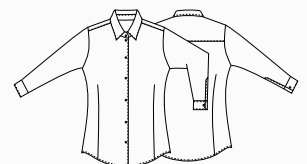
XS ÷ 3XL Regular Fit

COD. Q1NX0168

Art. 11P01057
U32 Nero / Black

Tessuto / Fabric

65% poliestere 35% cotone
65% polyester 35% cotton
110 g / m²





COD. Q9R00220

C02 Grigio chiaro / *Light grey*



COD. Q9R00220

U35 Bordeaux / *Burgundy*



COD. Q9R00220

U32 Nero / *Black*



COD. Q9R00220

D29 Verde / *Green*



COD. Q9R00220

Z48 Blu / *Blue*

ORTENSIA

Dettagli / Details

- 2 tasche
- 2 pockets

Taglie / Sizes

XS ÷ 4XL Slim Fit

COD. Q9R00220

C02 Grigio chiaro / Light grey
U35 Bordeaux / Burgundy
U32 Nero / Black
Z48 Blu / Blue
D29 Verde / Green

Tessuto / Fabric

65% poliestere 35% cotone
65% polyester 35% cotton
113 g / m²



COD. Q9R00220

C02 Grigio chiaro / Light grey



VIOLA

Dettagli / Details

- 3 tasche
- Maniche ad aletta

- 3 pockets
- Flap sleeves

Taglie / Sizes

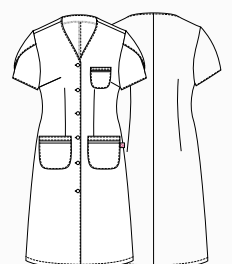
XS ÷ 4XL Slim Fit

COD. Q9R00221

Q32 Quadro nero / *Black checkered*
Q35 Quadro bordeaux / *Burgundy checkered*

Tessuto / Fabric

60% cotone 40% poliestere
60% cotton 40% polyester
145 g / m²





MAGNOLIA

Dettagli / Details

- Senza tasche
- No pockets

Taglie / Sizes

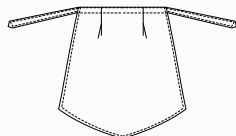
Taglia unica / One size

COD. Q9H00224

C01 Bianco / White

Tessuto / Fabric

100% cotone
100% cotton
185 g / m²



MIMOSA

Dettagli / Details

- Senza tasche
- No pockets

Taglie / Sizes

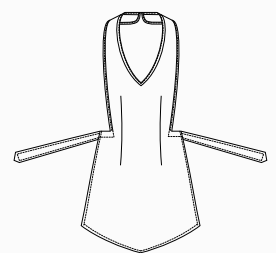
Taglia unica / One size

COD. Q9H00225

C01 Bianco / White

Tessuto / Fabric

100% cotone
100% cotton
185 g / m²



CAMELIA

Dettagli / Details

- 2 tasche
- 2 spacchetti laterali

- 2 pockets
- 2 side vents

Taglie / Sizes

XS ÷ 4XL Regular Fit

COD. Q9K00222

C01 Bianco / White

Tessuto / Fabric

65% poliestere 35% cotone
65% polyester 35% cotton
145 g / m²



COD. Q9K00223

C02 Grigio chiaro / Light grey

U35 Bordeaux / Burgundy

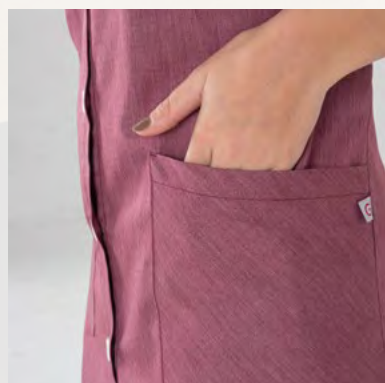
U32 Nero / Black

Z48 Blu / Blue

D29 Verde / Green

Tessuto / Fabric

65% poliestere 35% cotone
65% polyester 35% cotton
113 g / m²



COD. Q9K00223

U35 Bordeaux / Burgundy



COD. Q9K00222

C01 Bianco / White



COD. Q9K00223

C02 Grigio chiaro / Light grey



COD. Q9K00223

U35 Bordeaux / Burgundy



COD. Q9K00223

D29 Verde / Green



COD. Q9K00223

U32 Nero / Black



COD. Q9K00223

Z48 Blu / Blue



ALTEA

Dettagli / Details

- 2 tasche
- Chiusura con zip rovesciata

- 2 pockets
- Inverted zip fastening

Taglie / Sizes

XS ÷ 4XL Slim Fit

COD. Q9K00226

C01 Bianco / White

Tessuto / Fabric

100% cotone
100% cotton
185 g / m²



COD. Q9K00227

C04 Salmone / Salmon
C08 Azzurro chiaro / Light blue
M19 Verde acqua / Aqua green

Tessuto / Fabric

70% poliestere 30% cotone
70% polyester 30% cotton
132 g / m²



COD. Q9K00226

C01 Bianco / White



COD. Q9K00227

C08 Azzurro chiaro / Light blue



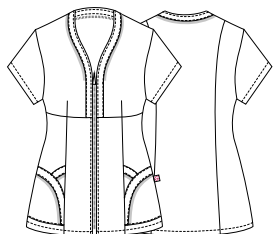
COD. Q9K00227

C04 Salmone / Salmon



COD. Q9K00227

M19 Verde acqua / Aqua green





COD. Q9K00227

C04 Salmone / Salmon

PRIMULA

Dettagli / Details

- 2 tasche
- Maniche arrotolabili

- 2 pockets
- Roll-up sleeves

Taglie / Sizes

XS ÷ 3XL Regular Fit

COD. Q9K00249

C01 Bianco / White

COD. Q9K00251

D25 Rosso / Red

Tessuto / Fabric

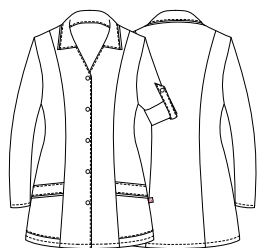
65% poliestere 35% cotone
65% polyester 35% cotton
143 g / m²

COD. Q9K00250

Q32 Quadro nero / Black checkered

Tessuto / Fabric

60% cotone 40% poliestere
60% cotton 40% polyester
100 g / m²



COD. Q9K00249

C01 Bianco / White



COD. Q9K00250

Q32 Quadro nero / Black checkered



COD. Q9K00251

D25 Rosso / Red





COD. Q9K00250

Q32 Quadro nero / *Black checkered*

RICKY

Dettagli / Details

- 3 tasche
- Maniche arrotolabili

- 3 pockets
- Roll-up sleeves

Taglie / Sizes

S ÷ 4XL Comfort Fit

COD. Q9K00252

C01 Bianco / White

COD. Q9K00254

D25 Rosso / Red

Tessuto / Fabric

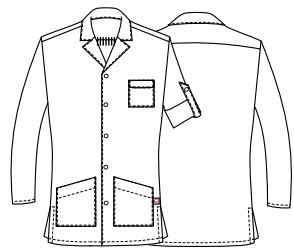
65% poliestere 35% cotone
65% polyester 35% cotton
143 g / m²

COD. Q9K00253

Q32 Quadro nero / Black checkered

Tessuto / Fabric

60% cotone 40% poliestere
60% cotton 40% polyester
100 g / m²



COD. Q9K00252

C01 Bianco / White



COD. Q9K00253

Q32 Quadro nero / Black checkered



COD. Q9K00254

D25 Rosso / Red





COD. Q9K00254

D25 Rosso / Red



COD. Q9H00228

Q32 Quadro nero / Black checkered



COD. Q9H00229

C02 Grigio chiaro / Light grey



COD. Q9H00229

U35 Bordeaux / Burgundy



COD. Q9H00229

Z48 Blu / Blue



COD. Q9H00229

D29 Verde / Green



COD. Q9H00232

C01 Bianco / White



COD. Q9H00233

D25 Rosso / Red



COD. Q9H00233

U32 Nero / Black



COD. Q9H00270

C04 Salmone / Salmon



COD. Q9H00270

C08 Azzurro chiaro / Light blue



COD. Q9H00270

M19 Verde acqua / Aqua green



ZEFIRO

Dettagli / Details

- 3 tasche
- Chiusura con laccetti sui fianchi

- 3 pockets
- Closure with string on the sides

Taglie / Sizes

Taglia unica / One size

COD. Q9H00228

Q32 Quadro nero / Black checkered

Tessuto / Fabric

60% cotone 40% poliestere
60% cotton 40% polyester
100 g / m²

COD. Q9H00229

C02 Grigio chiaro / Light grey
U35 Bordeaux / Burgundy
Z48 Blu / Blue
D29 Verde / Green

Tessuto / Fabric

65% poliestere 35% cotone
65% polyester 35% cotton
113 g / m²

COD. Q9H00232

C01 Bianco / White

COD. Q9H00233

D25 Rosso / Red
U32 Nero / Black

Tessuto / Fabric

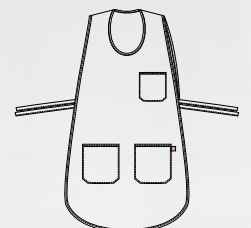
65% poliestere 35% cotone
65% polyester 35% cotton
143 g / m²

COD. Q9H00270

C04 Salmone / Salmon
C08 Azzurro chiaro / Light blue
M19 Verde acqua / Aqua green

Tessuto / Fabric

70% poliestere 30% cotone
70% polyester 30% cotton
132 g / m²



COD. Q9H00233

U32 Nero / Black





La collezione **Giblor's Essential** amplia l'offerta del brand e propone una gamma di prodotti ancor più competitiva per il settore **medicale e wellness**.

Grazie al know-how maturato dall'azienda in materia di tessuti e trattamenti, che ne assicurano le performance, i capi che fanno parte della linea **Essential Health&Wellness** garantiscono facilità di manutenzione e durata nel tempo, oltre che grande libertà di movimento e un fit perfetto, elementi imprescindibili per una divisa da lavoro di qualità.

La linea propone un ricco e variegato assortimento di casacche destinate al settore wellness, e molte sono le proposte per il settore medico, dove il colore è grande protagonista, grazie soprattutto ad alcune nuove nuance molto contemporanee.

ESSENTIAL

COLLECTION

*The **Giblor's Essential** collection expands the brand offer and proposes an even more competitive range of products for the **medical and wellness** sector.*

*Thanks to the know-how gained by the company in the field of fabrics and treatments, which ensure the performance, the garments that are part of the **Essential Health&Wellness** line guarantee ease of maintenance and durability, as well as great freedom of movement and a perfect fit, which are essential elements for a quality work uniform.*

The line offers a rich and varied assortment of jackets intended for the wellness sector, as well as many proposals for the medical sector, where colour is a great protagonist, thanks especially to some new contemporary nuances.



MIKE

Dettagli / Details

- 3 tasche
- Abbottonatura con automatici
- Polsino con elastico

- 3 pockets
- Buttoning with press studs
- Cuff with elastic band

Taglie / Sizes

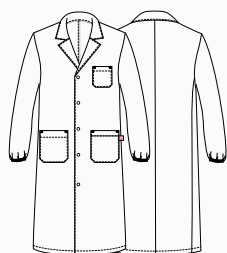
XS ÷ 4XL Regular Fit

COD. Q3R00247

C01 Bianco / White

Tessuto / Fabric

100% cotone
100% cotton
185 g / m²



MILLY

Dettagli / Details

- 3 tasche
- Abbottonatura con automatici
- Polsino con elastico

- 3 pockets
- Buttoning with press studs
- Cuff with elastic band

Taglie / Sizes

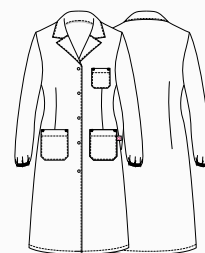
XS ÷ 3XL Regular Fit

COD. Q3R00248

C01 Bianco / White

Tessuto / Fabric

100% cotone
100% cotton
185 g / m²





TRISTANO

Dettagli / Details

- 3 tasche
- Polsino con elastico
- Abbottonatura nascosta con bottoni 4 fori

- 3 pockets
- Cuff with elastic band
- Concealed buttoning with 4-hole buttons

Taglie / Sizes

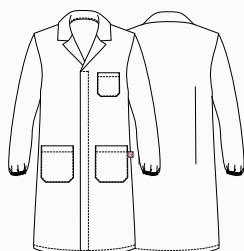
S ÷ 4XL Slim Fit

COD. Q3R00261

C01 Bianco / White

Tessuto / Fabric

100% cotone
100% cotton
185 g / m²



ISOTTA

Dettagli / Details

- 3 tasche
- Polsino con elastico
- Abbottonatura nascosta con bottoni 4 fori

- 3 pockets
- Cuff with elastic band
- Concealed buttoning with 4-hole buttons

Taglie / Sizes

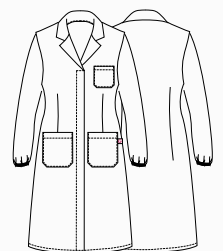
XS ÷ 3XL Regular Fit

COD. Q3R00262

C01 Bianco / White

Tessuto / Fabric

100% cotone
100% cotton
185 g / m²





Casacca
GABRIELE
pag. 136



GABRIELE

Dettagli / Details

- Chiusura con zip rovesciata
- Taschino sul petto
- 2 tasche
- Polsini con elastico
- Doppio cursore
- 2 spacchetti dietro

- *Inverted zip fastening*
- *Breast pocket*
- *2 pockets*
- *Cuffs with elastic band*
- *Double cursor*
- *2 rear vents*

Taglie / Sizes

S ÷ 4XL Slim Fit

COD. Q3KX0174

Art. 20P03K191
C01 Bianco / White

COD. Q3KX0176

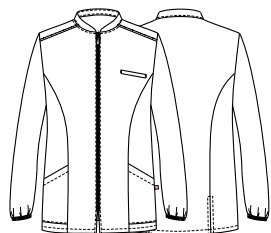
Art. 21P03K194
Z48 Blu / Blue

COD. Q3KX0175

Art. 20P03K194
D29 Verde / Green
M18 Azzurro / Light blue

Tessuto / Fabric

100% cotone
100% cotton
185 g / m²



COD. Q3KX0174

Art. 20P03K191
C01 Bianco / White



COD. Q3KX0176

Art. 21P03K194
Z48 Blu / Blue
100% cotone / cotton - 185 g / m²



COD. Q3KX0175

Art. 20P03K194
D29 Verde / Green
100% cotone / cotton - 185 g / m²



COD. Q3KX0175

Art. 20P03K194
M18 Azzurro / Light blue
100% cotone / cotton - 185 g / m²



**PANTALONI COORDINABILI
MATCHING PANTS**

pag. 140

ALICE

Dettagli / Details

- Chiusura con zip rovesciata
- Taschino sul petto
- 2 tasche
- Polsini con elastico
- Doppio cursore

- *Inverted zip fastening*
- *Breast pocket*
- *2 pockets*
- *Cuffs with elastic band*
- *Double cursor*

Taglie / Sizes

XS ÷ 3XL Slim Fit

COD. Q3KX0177

Art. 20P03K192
C01 Bianco / White

COD. Q3KX0179

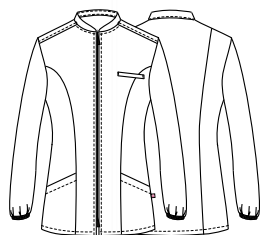
Art. 21P03K195
Z48 Blu / Blue

COD. Q3KX0178

Art. 20P03K195
D29 Verde / Green
M18 Azzurro / Light blue

Tessuto / Fabric

100% cotone
100% cotton
185 g / m²



COD. Q3KX0177

Art. 20P03K192
C01 Bianco / White



COD. Q3KX0179

Art. 21P03K195
Z48 Blu / Blue
100% cotone / cotton - 185 g / m²



COD. Q3KX0178

Art. 20P03K195
D29 Verde / Green
100% cotone / cotton - 185 g / m²



COD. Q3KX0178

Art. 20P03K195
M18 Azzurro / Light blue
100% cotone / cotton - 185 g / m²



**PANTALONI COORDINABILI
MATCHING PANTS**

pag. 140

ALAN

Dettagli / Details

- 2 tasche
- 1 tasca sul retro
- Elastico e coulisse

- 2 pockets
- 1 rear pocket
- Elasticated waistband with drawstring

Taglie / Sizes

XS ÷ 4XL Slim Fit

COD. Q3PX0181

Art. 21P03P1340
Z48 Blu / Blue

COD. Q3PX0180

Art. 1340
D29 Verde / Green
M18 Azzurro / Light blue

Tessuto / Fabric

100% cotone
100% cotton
185 g / m²



COD. Q3PX0181

ART. 21P03P1340
Z48 Blu / Blue



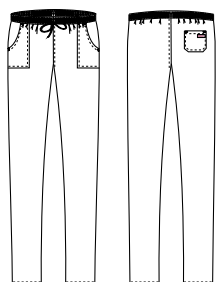
COD. Q3PX0180

Art. 1340
D29 Verde / Green



COD. Q3PX0180

Art. 1340
M18 Azzurro / Light blue



PIERO

Dettagli / Details

- 2 tasche
- Taschino sul petto
- 2 spacchetti laterali
- 2 pockets
- Breast pocket
- 2 side vents

Taglie / Sizes

XS ÷ 4XL Slim Fit



COD. Q3KX0170

Art. 21P03K1335
Z48 Blu / Blue

COD. Q3KX0169

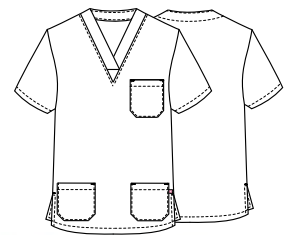
Art. 1335
D29 Verde / Green
M18 Azzurro / Light blue

Tessuto / Fabric

100% cotone / cotton
185 g / m²

COD. Q3KX0170

Art. 21P03K1335
Z48 Blu / Blue



COD. Q3KX0169

Art. 1335
M18 Azzurro / Light blue



COD. Q3KX0169

Art. 1335
D29 Verde / Green



MILENA

Dettagli / Details

- 2 tasche
- Taschino sul petto
- 2 spacchetti laterali

- 2 pockets
- Breast pocket
- 2 side vents

Taglie / Sizes

XS ÷ 3XL Slim Fit

COD. Q3KX0171

Art. 20P03K193
C01 Bianco / White

COD. Q3KX0173

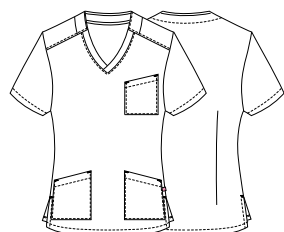
Art. 21P03K196
Z48 Blu / Blue

COD. Q3KX0172

Art. 20P03K196
D29 Verde / Green
M18 Azzurro / Light blue

Tessuto / Fabric

100% cotone
100% cotton
185 g / m²



COD. Q3KX0171

Art. 20P03K193
C02 Bianco / White



COD. Q3KX0172

Art. 20P03K196
D29 Verde / Green
100% cotone / cotton - 185 g / m²



COD. Q3KX0173

Art. 21P03K196
Z48 Blu / Blue
100% cotone / cotton - 185 g / m²



COD. Q3KX0172

Art. 20P03K196
M18 Azzurro / Light blue
100% cotone / cotton - 185 g / m²



**PANTALONI COORDINABILI
MATCHING PANTS**

pag. 140

health & wellness

Casacche unisex

Unisex tunics

GARY

Dettagli / Details

- Casacca unisex
- 2 tasche
- Taschino sul petto
- 2 spacchetti laterali

- Unisex tunic
- 2 pockets
- Breast pocket
- 2 side vents

Taglie / Sizes

XS ÷ 4XL Slim Fit

COD. Q3K00244

P18 Profilo azzurro / Light blue piping

P24 Profilo arancio / Orange piping

P29 Profilo verde / Green piping

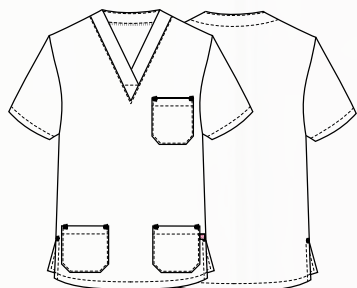
P48 Profilo blu / Blue piping

Tessuto / Fabric

100% cotone

100% cotton

185 g / m²



PANTALONI COORDINABILI
MATCHING PANTS

pag. 148 - 149

COD. Q3K00244

P24 Profilo arancio / Orange piping



COD. Q3K00244

P48 Profilo blu / Blue piping



COD. Q3K00244

P29 Profilo verde / Green piping



COD. Q3K00244

P18 Profilo azzurro / Light blue piping



COD. Q3K00244

P24 Profilo arancio / Orange piping

health & wellness

Casacche unisex

Unisex tunics

JASON

Dettagli / Details

- Casacca unisex
- 2 tasche
- Taschino sul petto
- 2 spacchetti laterali

- Unisex tunic
- 2 pockets
- Breast pocket
- 2 side vents

Taglie / Sizes

XS ÷ 4XL Slim Fit

COD. Q3K00242

C01 Bianco / White

Tessuto / Fabric

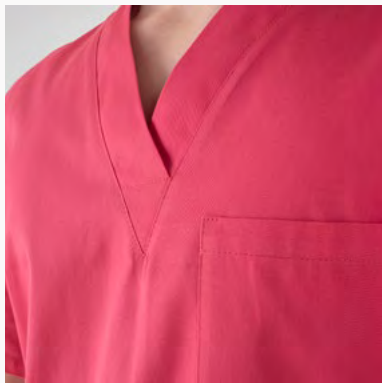
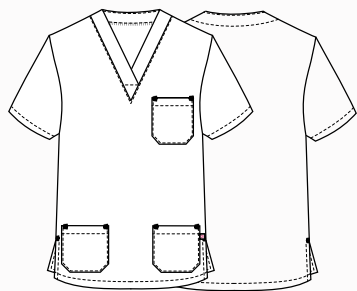
100% cotone
100% cotton
185 g / m²

COD. Q3K00243

C09 Pistacchio / Pistachio
Z46 Fucsia / Fuchsia
U38 Bluette / Royal
C07 Lilla chiaro / Light lilac
D24 Arancio / Orange

Tessuto / Fabric

100% cotone
100% cotton
200 g / m²



PANTALONI COORDINABILI
MATCHING PANTS

pag. 148 - 149



COD. Q3K00243

Z46 Fucsia / Fuchsia



COD. Q3K00242

C01 Bianco / White



COD. Q3K00243

C09 Pistacchio / Pistachio



COD. Q3K00243

Z46 Fucsia / Fuchsia



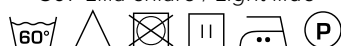
COD. Q3K00243

U38 Bluette / Royal



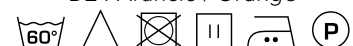
COD. Q3K00243

C07 Lilla chiaro / Light lilac



COD. Q3K00243

D24 Arancio / Orange



PITAGORA

Dettagli / Details

- 2 tasche
- 1 tasca sul retro
- Elastico e coulisse

- 2 pockets
- 1 rear pocket
- Elasticated waistband with drawstring

Taglie / Sizes

XS ÷ 4XL Slim Fit

COD. Q3P00245

C01 Bianco / White

Tessuto / Fabric

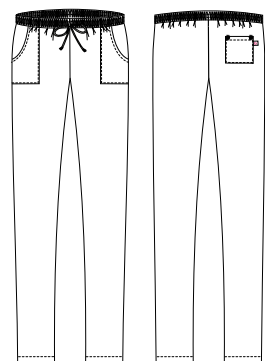
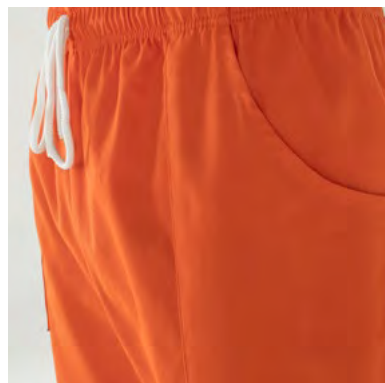
100% cotone
100% cotton
185 g / m²

COD. Q3P00246

C09 Pistacchio / Pistachio
Z46 Fucsia / Fuchsia
U38 Bluette / Royal
C07 Lilla chiaro / Light lilac
D24 Arancio / Orange

Tessuto / Fabric

100% cotone
100% cotton
200 g / m²



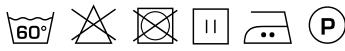
COD. Q3P00245

C01 Bianco / White



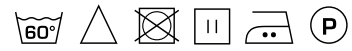
COD. Q3P00246

C09 Pistacchio / Pistachio



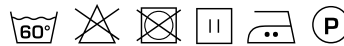
COD. Q3P00246

Z46 Fucsia / Fuchsia



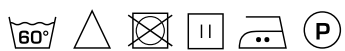
COD. Q3P00246

U38 Bluette / Royal



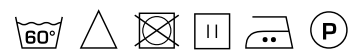
COD. Q3P00246

C07 Lilla chiaro / Light lilac



COD. Q3P00246

D24 Arancio / Orange



ACCESSORI COORDINABILI
MATCHING ACCESSORIES
pag. 163





health & wellness

Casacche donna

Woman tunics

CARMEN

Dettagli / Details

- Taschino sul petto
- 2 tasche
- Chiusura con zip rovesciata
- Inserti in rete

- Breast pocket
- 2 pockets
- Inverted zip fastening
- Network fabric panels

Taglie / Sizes

XS ÷ 3XL Slim Fit

COD. Q2K00238

C01 Bianco / White

COD. Q2K00239

U32 Nero / Black

Tessuto / Fabric

100% poliestere
100% polyester
86 g / m²



BIONIC
FINISH[®] C₆

ULTRA
LIGHT



BIONIC
FINISH[®] C₆

ULTRA
LIGHT
86 GR.

COD. Q2K00239

U32 Nero / Black

COD. Q2K00238

C01 Bianco / White

MAURIZIO

Dettagli / Details

- Taschino sul petto
- 1 tasca
- Chiusura con zip rovesciata
- Inserti in rete

- Breast pocket
- 1 pocket

- Inverted zip fastening
- Network fabric panels

Taglie / Sizes

S ÷ 4XL Slim Fit

COD. Q2K00259

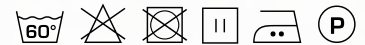
C01 Bianco / White

COD. Q2K00260

U32 Nero / Black

Tessuto / Fabric

100% poliestere
100% polyester
86 g / m²



ULTRA
LIGHT

BIONIC
FINISH C6

ULTRA
LIGHT
86 GR.



COD. Q2K00260

U32 Nero / Black

COD. Q2K00259

C01 Bianco / White

health & wellness

Casacche donna

Woman tunics

ELEA

Dettagli / Details

- 2 tasche
- Bottoni a pressione
- Inserti in rete

- 2 pockets
- Press studs
- Network fabric panels

Taglie / Sizes

XS ÷ 3XL Slim Fit

COD. Q2K00230

C01 Bianco / White

COD. Q2K00231

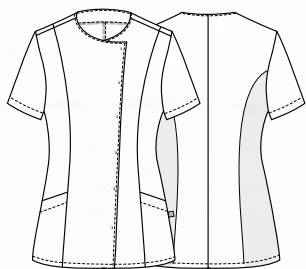
U32 Nero / Black

Tessuto / Fabric

65% poliestere 35% cotone

65% polyester 35% cotton

143 g / m²



COD. Q2K00231

U32 Nero / Black

COD. Q2K00230

C01 Bianco / White

PINES

Dettagli / Details

- 2 tasche
- Chiusura con zip rovesciata

- 2 pockets
- Inverted zip fastening

Taglie / Sizes

XS ÷ 3XL Slim Fit

COD. Q2K00255

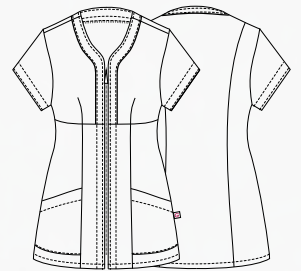
C01 Bianco / White

COD. Q2K00256

U32 Nero / Black

Tessuto / Fabric

65% poliestere 35% cotone
65% polyester 35% cotton
143 g / m²



COD. Q2K00255

C01 Bianco / White

COD. Q2K00256

U32 Nero / Black



health & wellness

Casacche donna

Woman tunics

SARA

Dettagli / Details

- 2 tasche
- Abbottonatura nascosta con automatici

- 2 pockets
- Concealed buttoning with press studs

Taglie / Sizes

XS ÷ 3XL Slim Fit

COD. Q2K00236

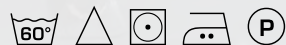
C01 Bianco / White

COD. Q2K00237

U32 Nero / Black

Tessuto / Fabric

65% poliestere 35% cotone
65% polyester 35% cotton
143 g / m²

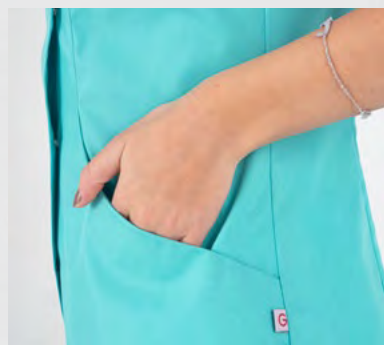
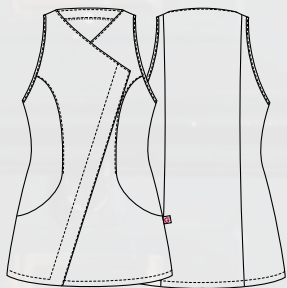
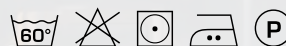


COD. Q2K00271

C04 Salmone / Salmon
C08 Azzurro chiaro / Light blue
M19 Verde acqua / Aqua green

Tessuto / Fabric

70% poliestere 30% cotone
70% polyester 30% cotton
132 g / m²



COD. Q2K00237

U32 Nero / Black



COD. Q2K00236

C01 Bianco / White



COD. Q2K00237

U32 Nero / Black



COD. Q2K00271

C04 Salmone / Salmon



COD. Q2K00271

C08 Azzurro chiaro / Light blue



COD. Q2K00271

M19 Verde acqua / Aqua green

ILARIA

Dettagli / Details

- Ampia tasca centrale
- Spacchetti sulle maniche
- 2 spacchetti laterali

- Wide central pocket
- Vents on sleeves
- 2 side vents

Taglie / Sizes

XS ÷ 3XL Regular Fit

COD. Q2K00257

C01 Bianco / White

COD. Q2K00258

U32 Nero / Black

Tessuto / Fabric

65% poliestere 35% cotone
65% polyester 35% cotton
143 g / m²



COD. Q2K00257

C01 Bianco / White

COD. Q2K00258

U32 Nero / Black

CAMERON

Dettagli / Details

- 2 tasche - 2 tasche sul retro
- Elastico e coulisse

- 2 pockets - 2 rear pockets
- Elasticated waistband with drawstring

Taglie / Sizes

XS ÷ 3XL Slim Fit

COD. Q2P00240

C01 Bianco / White

Tessuto / Fabric

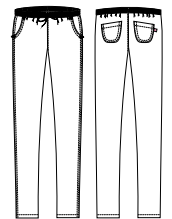
100% cotone
100% cotton
185 g / m²

COD. Q2P00241

U32 Nero / Black

Tessuto / Fabric

65% poliestere 35% cotone
65% polyester 35% cotton
200 g / m²



COD. Q2P00240

C01 Bianco / White



COD. Q2P00241

U32 Nero / Black



CLEOPATRA

Dettagli / Details

- 2 tasche - 1 tasca sul retro
- Elastico e coulisse

- 2 pockets - 1 rear pocket
- Elasticated waistband with drawstring

Taglie / Sizes

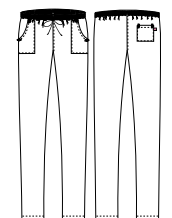
XS ÷ 3XL Slim Fit

COD. Q3P00283

C01 Bianco / White
U32 Nero / Black

Tessuto / Fabric

65% poliestere 35% cotone
65% polyester 35% cotton
143 g / m²



COD. Q3P00283

C01 Bianco / White



COD. Q3P00283

U32 Nero / Black



 Fresh &
Stretch



COD. Q2L00219

C01 Bianco / White

JEFF

Dettagli / Details

- Collo e fondo maniche a costine
- Spacchi laterali
- Ricamo manica sinistra (indossata)
- Ribbed collar and bottom sleeves
- Side vents
- Embroidery on the left sleeve (worn)

Taglie / Sizes

S ÷ 4XL Slim Fit

Fresh & Stretch



COD. Q2L00219

C01 Bianco / White
U32 Nero / Black
Z48 Blu / Blue

Tessuto / Fabric

100% poliammide
100% polyamide
195 g / m²



COD. Q2L00219

C01 Bianco / White



COD. Q2L00219

Z48 Blu / Blue



Fresh & Stretch



COD. Q2L00219

U32 Nero / Black



SUSAN

Dettagli / Details

- Collo e fondo maniche a costine
- Spacchi laterali
- Ricamo manica sinistra (indossata)

- Ribbed collar and bottom sleeves
- Side vents
- Embroidery on the left sleeve (worn)

Taglie / Sizes

XS ÷ 3XL Slim Fit

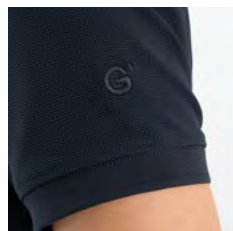


COD. Q2L00268

C01 Bianco / White
U32 Nero / Black
Z48 Blu / Blue

Tessuto / Fabric

100% poliammide
100% polyamide
195 g / m²



COD. Q2L00268

C01 Bianco / White



COD. Q2L00268

U32 Nero / Black



COD. Q2L00268

Z48 Blu / Blue



BANDANA MERCURIO

Taglie / Sizes

Taglia unica / One size

COD. Q5100264

U38 Bluette / Royal
C09 Pistacchio / Pistachio
C07 Lilla chiaro / Light lilac
D24 Arancio / Orange
Z46 Fucsia / Fuchsia

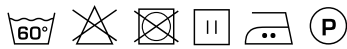
Tessuto / Fabric

100% cotone
100% cotton
200 g / m²



COD. Q5100264

U38 Bluette
Royal



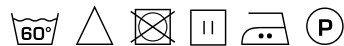
COD. Q5100264

C09 Pistacchio
Pistachio



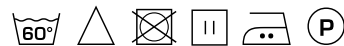
COD. Q5100264

C07 Lilla chiaro
Light lilac



COD. Q5100264

D24 Arancio
Orange



COD. Q5100264

Z46 Fucsia
Fuchsia





DALLA FORESTA ALLA PRODUZIONE

Conosciute per il loro comfort naturale e per il processo di produzione rispettoso per l'ambiente, le fibre **TENCEL™** Lyocell offrono qualità, performance e versatilità. Proprietà fisiche uniche gli conferiscono alta resistenza, eccellente gestione dell'umidità e delicatezza sulla pelle.



PRODUZIONE SOSTENIBILE

Le fibre **TENCEL™** Lyocell si sono guadagnate la loro reputazione grazie al processo di produzione a ciclo chiuso rispettoso per l'ambiente, che trasforma la polpa del legno in fibra di cellulosa con alta efficienza delle risorse e un basso impatto ambientale.

La speciale fibra, di origine botanica viene estratta da legno proveniente da piantagioni forestali sostenibili, utilizzando un solvente riciclato quasi al 100%.

Grazie ai microscopici canali tra le singole fibre, **TENCEL™** assorbe fino al 50% di umidità in più rispetto al cotone, riducendo drasticamente la formazione di batteri. Lasciando la pelle piacevolmente asciutta e mantenendo il suo naturale equilibrio, questa fibra evita lo sviluppo di irritazioni.

I tessuti contenenti la fibra **TENCEL™**, sono caratterizzati da un'altissima stabilità dimensionale, si dimostrano **eccezionalmente forti e resistenti all'usura**, e sono adatti ai lavaggi industriali. Grazie all'insieme di queste eccellenti caratteristiche, **TENCEL™** può essere considerata la fibra del futuro.

FROM THE FOREST TO PRODUCTION

Known for their natural comfort and environmentally friendly production process, the **TENCEL™** Lyocell fibers offer quality, performance and versatility. Unique physical properties give it high strength, excellent moisture management and delicacy on the skin.

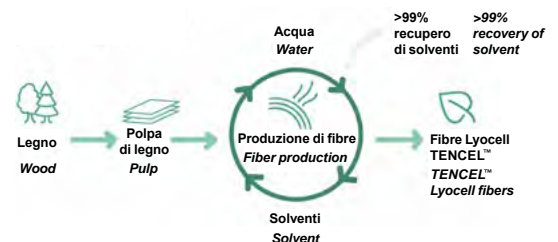
SUSTAINABLE PRODUCTION

TENCEL™ Lyocell fibers have gained a commendable reputation for their environmentally responsible closed loop production process, which transforms wood pulp into cellulosic fibers with high resource efficiency and low ecological impact. This special fiber, of botanic origin, is extracted from sustainable forests, using an almost 100% recycled solvent.

Thanks to the microscopic channels between the individual fibers, **TENCEL™** absorbs up to 50% more of moisture than cotton, reducing dramatically the growth of bacteria. Leaving the skin pleasantly dry and keeping its natural balance, this fiber prevents skin irritation.

TENCEL™ fibers are characterized by a very high dimensional stability, they prove to be **exceptionally strong and resistant to wear**, and are suitable for industrial washing. Thanks to all these characteristics, **TENCEL™** can be considered the fiber of the future.

TENCEL™ Lyocell fibers Processo di produzione / production process





Le fibre in **TENCEL™** Lyocell supportano le proprietà di regolazione della temperatura corporea attraverso la gestione dell'umidità.

***TENCEL™** Lyocell fibers support body temperature, regulating properties through their moisture management.*

Attraverso la gestione dell'umidità, le fibre di **TENCEL™** Lyocell assorbono l'umidità in modo efficiente: di conseguenza, le fibre di **TENCEL™** Lyocell forniscono un ambiente meno favorevole alla crescita batterica, offrendo migliori qualità igieniche.

*Through moisture management, **TENCEL™** Lyocell fibers absorb moisture efficiently: consequently, **TENCEL™** Lyocell fibers provide a less favorable environment for bacterial growth, offering better hygienic qualities.*



Le fibre in **TENCEL™** Lyocell supportano le proprietà di regolazione della temperatura corporea attraverso la gestione dell'umidità. Assorbimento e rilascio di umidità, contribuiscono alla traspirabilità del tessuto che supporta la regolazione termica naturale del corpo.

***TENCEL™** Lyocell fibers support body temperature, regulating properties through their moisture management. Absorption and release of moisture, contribute to fabric breathability that supports natural thermal regulation of the body.*

Le fibre di **TENCEL™** Lyocell sono naturalmente morbide al tatto, offrono un comfort duraturo e mostrano una superficie liscia, donando ai tessuti una sensazione morbida e garantendo comfort alle pelli sensibili.

***TENCEL™** Lyocell fibers are naturally soft to the touch, offer long-lasting comfort and exhibit a smooth surface area, giving fabrics a soft feel and ensuring comfort for sensitive skin.*



Le fibre di **TENCEL™** Lyocell sono resistenti e godono di una lunga durata grazie alla loro maggiore resistenza tra le fibre di cellulosa.

***TENCEL™** Lyocell fibers are versatile and distinguished by their high tenacity prole among cellulose fibers.*

Tutte le fibre standard di **TENCEL™** Lyocell sono certificate come biodegradabili e compostabili in condizioni industriali, domestiche, del suolo e marine, quindi possono tornare completamente alla natura.

*Derived from nature, all **TENCEL™** standard Lyocell fiber types have been certified as biodegradable and compostable under industrial, home, soil and marine conditions, thus they can fully revert back to nature.*



www.tencel.com

BIONIC-FINISH® C₆

È il primo sistema idrorepellente completo a livello mondiale per l'industria tessile.

It is the first complete water repellent system in the world for the textile industry.

BREVETTATO E SVILUPPATO PER CONFERIRE AI TESSUTI CARATTERISTICHE DI IDROREPELLENZA ALL'ACQUA, AGLI OLI E ALLE MACCHIE IN GENERALE.

Il **BIONIC-FINISH®** è ispirato alla pelle dello squalo che, contrariamente a quanto si pensi, non è liscia ma piuttosto ruvida e costituita da piccolissime scanalature longitudinali che lasciano passare l'acqua sul corpo in modo controllato, riducendone al minimo l'attrito. Grazie a questa speciale struttura, l'effetto pelle di squalo è stato implementato nei costumi da bagno per le competizioni ed è tra le scoperte più conosciute della bionica.

Il sistema **BIONIC-FINISH®** garantisce massima traspirabilità e consente al tessuto di mantenere una mano molto morbida, altissimo comfort, un'eccellente durata nel tempo e colori sempre nuovi e brillanti. Ma non è tutto: la composizione di questo agente impermeabilizzante offre il vantaggio di un'asciugatura estremamente rapida.

PATENTED AND DEVELOPED TO GIVE THE FABRICS WATER-REPELLENT CHARACTERISTICS TO WATER, OILS AND STAINS IN GENERAL.

The **BIONIC-FINISH®** is inspired by shark skin which, contrary to popular belief, is not smooth but rather rough and consists of very small longitudinal grooves that allow water to pass over the body in a controlled manner, reducing friction to a minimum. Thanks to this special structure, the shark skin effect has been implemented in swimwear for competitions and is one of the best known discoveries in bionics.

The **BIONIC-FINISH®** system guarantees maximum breathability and allows the fabric to maintain a very soft hand, very high comfort, excellent durability and always new and bright colors. But that's not all: the composition of this waterproofing agent offers the advantage of extremely fast drying.

BIONIC-FINISH® C₆

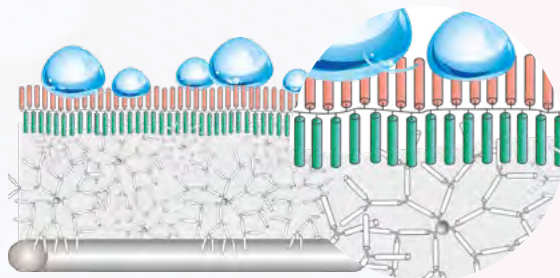
La nuova tecnologia **BIONIC-FINISH® C₆** a basso impatto di fluoro, per un futuro migliore!

*The new **BIONIC-FINISH® C₆** low impact fluoride technology, for a better future!*

Gocce d'acqua / Water drops
Fluorocarburi / Fluorocarbons
Catene di idrocarburi / Hydrocarbon chains

RUCOSTAR - **BIONIC-FINISH®**
Dendimedri / Dendrimers

Tessuto / Fabric



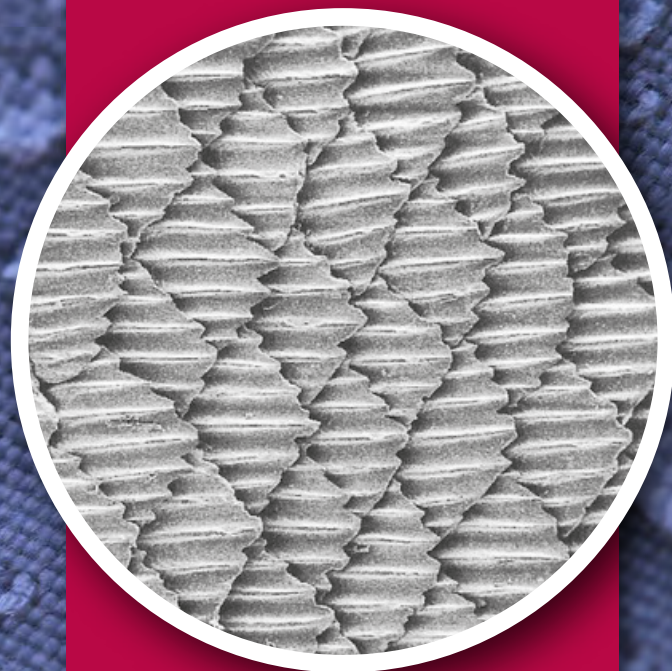
BIONIC
FINISH® C₆

BY RUDOLF GROUP

TRASPIRABILITÀ
BREATHABILITY

DURATA
DURATION

ASCIUGATURA RAPIDA
QUICK DRYING



I tessuti nel nuovo **BIONIC-FINISH® C₆** offrono una sensazione eccezionalmente morbida rispetto ai materiali trattati convenzionalmente.

*Fabrics made with the new **BIONIC-FINISH® C₆** offer an exceptionally soft feel compared to conventionally treated materials.*

BIONIC-FINISH® C₆

Idro-oleorepellente, massimo comfort
Hydro-oil repellent, maximum comfort

www.rudolf-group.com

SILVERPLUS®

Igiene, protezione e freschezza per i tessuti di domani: maggiore utilizzo, minor consumo di acqua.

Hygiene, protection and freshness for tomorrow's fabrics: greater use, less water consumption.

GRAZIE AL TRATTAMENTO ANTIBATTERICO SILVERPLUS®, I TESSUTI SONO IGIENIZZATI E PROTETTI DAGLI ODORI SGRADIEVOLI DEL CORPO.

Questo trattamento innovativo crea un deposito virtualmente infinito dal quale vengono liberati ioni d'argento positivi altamente efficaci in piccole quantità, esattamente dosati quando necessario, cioè in presenza di umidità.

Tessuti freschi anche a basse temperature di lavaggio. Sono necessarie quantità significative di energia per il lavaggio, l'asciugatura, la stiratura dei capi professionali ad alte temperature.

SILVERPLUS® è il rimedio: i consumatori risparmiano energia, denaro e contribuiscono alla protezione dell'ambiente.

THANKS TO THE SILVERPLUS® ANTIBACTERIAL TREATMENT, THE FABRICS ARE SANITIZED AND PROTECTED FROM UNPLEASANT BODY ODORS.

This innovative treatment creates a virtually infinite deposit from which highly effective positive silver ions are released in small quantities, exactly dosed when necessary, that is, in the presence of moisture.



FRESH FABRICS EVEN AT LOW WASHING TEMPERATURES.

Significant amounts of energy are required for washing, drying and ironing professional garments at high temperature.

SILVERPLUS® is the remedy consumers save energy, money and contribute to the protection of the environment.

Tessuto assorbi-sudore con sistema protettivo SILVERPLUS®, ottimale evaporazione dell'umidità sulla superficie del tessuto

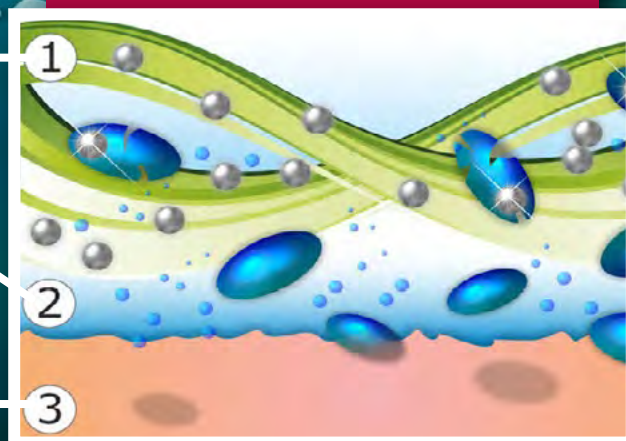
Sweat-absorbing fabric with SILVERPLUS® protective system, optimal evaporation of moisture on the surface of the fabric

Evaporazione dell'umidità tra pelle / tessuto

Evaporation of moisture between leather / fabric

Processo di produzione del sudore

Sweat production process



SILVER+

BY RUDOLF GROUP

Il tessuto trattato con **SILVERPLUS®** mostra una riduzione batterica del 99,9% dopo 100 cicli di lavaggio a 60° C e resiste anche al lavaggio a secco.

È stato dimostrato che l'uso di **SILVERPLUS®** non ha effetti negativi sull'ambiente.

- Resistente ai lavaggi, anche a secco
- Non altera il naturale equilibrio della pelle
- Non influenza lo spurgo biologico nel trattamento delle acque reflue

ANTIMICROBICO
ANTIMICROBIAL

EFFETTO FRESCHEZZA
FRESHNESS EFFECT

ECOLOGICO
ECOLOGICAL

The fabric treated with **SILVERPLUS®** shows a bacterial reduction of 99.9% after 100 washing cycles at 60 ° C and is resistant to washing and dry cleaning.

It has been shown that the use of **SILVERPLUS®** has no negative effects on the environment.

- Resistant to washing, even when dry
- Does not alter the natural balance of the skin
- Does not affect biological purge in wastewater treatment



Lavaggio ad acqua / Water washing

La vaschetta è il simbolo grafico usato per le informazioni relative al lavaggio in acqua.
The basin is the symbol used for information relating to water washing.

 <p>Lavaggio delicato Gentle wash</p>	 <p>Lavaggio 30° / 40° / 60° / 95°. Wash 30° / 40° / 60° / 95°.</p>	 <p>Lavaggio a mano con temperatura massima di 40°. Il capo non deve essere strizzato. The garment must be hand-washed, the temperature must not exceed 40°C. The garment must not be wrung.</p>	 <p>Non lavare. Do not wash.</p>
--	--	---	---






Candeggio / Bleaching

Il triangolo è il simbolo del candeggio al cloro.
The triangle is the chlorine bleaching symbol.

 <p>È permesso l'uso di qualsiasi candeggiante diluito al 3%. It is allowed the use of any bleach diluted to 3%.</p>	 <p>Non candeggiare. Do not bleach.</p>
---	--



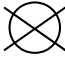
Stiratura / Ironing

Il ferro da stiro è il simbolo relativo alle informazioni sulla stiratura. La temperatura ideale per ogni capo è indicata da punti neri riportati sul ferro.
The iron is the symbol used for information relating to ironing. The black dots indicate the suitable temperature.

 <p>Stiro temperatura massima 200° Max ironing temperature 200°</p>	 <p>Stiro temperatura massima 150° Max ironing temperature 150°</p>	 <p>Stiro temperatura massima 110° Max ironing temperature 110°</p>	 <p>Non stirare. Do not iron.</p>	 <p>Non stirare a vapore. Do not steam iron.</p>
--	--	--	--	---

Lavaggio a secco / Dry cleaning

Il cerchio è il simbolo grafico relativo al lavaggio a secco e i segni riportati all'interno indicano il tipo di solvente adatto al tessuto.
The circle is the dry-cleaning symbol and the signs on the inside indicate the suitable solvent-type.

 <p>Lavare a secco con qualsiasi solvente. Dry clean using any solvent.</p>	 <p>Lavaggio delicato a secco con qualsiasi solvente. Gentle dry clean using any solvent.</p>	 <p>Non lavare a secco. Do not dry clean.</p>
--	--	--

Asciugatura / Drying

I simboli dell'asciugatura sono rappresentati da un quadrato.
The drying symbols are represented by a square.

 <p>Asciugare a tamburo a bassa temperatura. Tumble dry low temperature.</p>	 <p>Non asciugare a tamburo. Do not tumble dry.</p>	 <p>Asciugatura verticale senza spremitura. Vertical drying without squeezing.</p>
---	--	---

CONSIGLI TECNICI / TECHNICAL ADVICES

Per una buona durata dei capi sono consigliabili i seguenti accorgimenti.
 For a well wearing of the clothes please read the following suggestions.

1	Lavare i capi a rovescio.	<i>Wash the clothes inside out.</i>
2	Lavare i capi in acqua tiepida per almeno due volte prima di procedere con modifiche sartoriali.	<i>Wash the clothes in lukewarm water at least for two times before proceeding with sartorial changes.</i>
3	Non lasciare i capi in ammollo.	<i>Never leave to soak.</i>
4	Non è consigliabile usare prodotti chimici e in caso di necessità usare una modica quantità di candeggina (proporzione massima del 3%) solo su tessuti tinti in filo o color bianco. La ditta Giblor's si esonera da responsabilità per scolorimenti o usure dei tessuti, causati dall'uso improprio di eventuali prodotti chimici.	<i>If necessary, use a little quantity of bleach (maximum proportion of 3%) only for white and yarn dyed fabrics. Giblor's is not responsible for the fading or wear of the fabrics, due to an inappropriate use of chemical product.</i>
5	Per gli stampati non strofinare né spazzolare.	<i>For printed clothes do not rub and do not brush.</i>
6	Il puro cotone prevede un ritiro del 3% massimo.	<i>Pure cotton will have a shrinkage of max 3%.</i>
7	Per lo stiro attenersi alle basse temperature per i tessuti misti e sintetici; per il cotone, invece potranno essere usate temperature più elevate.	<i>How to iron: for the mixed and synthetic clothes use low temperature; for the cotton you can use higher temperature.</i>
8	Mai procedere a smacchiature locali, pena il deterioramento dei tessuti.	<i>In order to avoid the deterioration of the fabrics, don't remove stains locally.</i>
9	I capi muniti di chiusura lampo vanno allacciati completamente prima del lavaggio in lavatrice per evitare che questa si deformi.	<i>Zip up all the clothes before washing them in the washing machine in order to avoid fastening deformation.</i>
10	Non porre mai a contatto la chiusura lampo con fonti di calore.	<i>Never place the zip in contact with heat sources.</i>

- A** **ADRIANO** pag. 26
ALAN pag. 35 - 140
ALICE pag. 138 - 139
ALTEA pag. 122 - 123
ANCONA pag. 39
ANDY pag. 41
ATENE pag. 35
AUGUSTIN pag. 8 - 9
AURORA pag. 115
- B** **BANDANA GIOVE** pag. 42
BANDANA MARTE pag. 42 - 43
BANDANA MERCURIO pag. 163
BARI pag. 39 - 82 - 83
BRUCE pag. 34
- C** **CALIFORNIA** pag. 68
CAMELIA pag. 120 - 121
CAMERON pag. 159
CAPPELLO SCUOLA pag. 40
CAPRI pag. 90 - 91
CARMEN pag. 152
CELINE pag. 10 - 11
CHICAGO pag. 72
CLEOPATRA pag. 159
COPPOLA pag. 101
COPRICAPO pag. 41
CRAVATTA DONNA pag. 100
CRAVATTA UNISEX pag. 100
- D** **DANA** pag. 104 - 106
DIONISIO pag. 14 - 15
DOUGLAS pag. 67 - 74 - 75
- E** **ELEA** pag. 154
ELIO pag. 105 - 107
ENRICO pag. 30 - 31 - 32
- F** **FARA** pag. 115
- G** **GABRIELE** pag. 136 - 137
GARY pag. 144 - 145
GIOIA pag. 94 - 95
GIOVANNI pag. 105 - 107
GIOVE pag. 33
GIUNONE pag. 38
- I** **ILARIA** pag. 158
ISOTTA pag. 133
IVAN pag. 29
- J** **JASON** pag. 146 - 147
JEFF pag. 160 - 161
JERRY pag. 96 - 97
- K** **KANSAS** pag. 69
KLIMT pag. 40
- L** **LANZAROTE** pag. 44
LATINA pag. 92 - 93
LAYLA pag. 104 - 106
LIONE pag. 49 - 51 - 53 - 55
LIPARI pag. 84 - 85
LONDON pag. 37
LUNA pag. 66 - 71
- M** **MAGNOLIA** pag. 119
- MANCHESTER** pag. 66
MATERA pag. 39 - 80 - 81
MATTEO pag. 110
MAURIZIO pag. 153
MIGUEL pag. 108
MIKE pag. 132
MILENA pag. 142 - 143
MILLY pag. 132
MIMOSA pag. 119
MINORCA pag. 44
MONET pag. 40
- N** **NAPOLI** pag. 48 - 50 - 52 - 54 - 58 - 60 - 62
NIZZA pag. 70
NOAH pag. 34
NOVAK pag. 112
- O** **OMERO** pag. 64
ORTENSIA pag. 116 - 117
- P** **PANAREA** pag. 98 - 99
PAPILLON pag. 100
PARIGI pag. 36 - 37
PATRIZIO pag. 16 - 17 - 20
PIERO pag. 141
PINES pag. 155
PITAGORA pag. 148 - 149
PLUTONE pag. 28
POSITANO pag. 86 - 87
PRIMULA pag. 124 - 125
PRINCE pag. 114
PUB pag. 88 - 89
- R** **RAUL** pag. 22 - 23
RENO pag. 48 - 50 - 52 - 54 - 58 - 60 - 62
RICKY pag. 126 - 127
RODANO pag. 59 - 61 - 63
ROSITA pag. 109
- S** **SARA** pag. 156 - 157
SCOTLAND pag. 49 - 51 - 53 - 55
SENNA pag. 59 - 61 - 63
SHANNON pag. 67
STELVIO pag. 44
SUSAN pag. 162
SUSI pag. 18 - 19 - 21
- T** **THIAGO** pag. 24 - 25
TOMMASO pag. 27
TOMMY pag. 101
TOQUE pag. 40
TORCIONE pag. 41
TRISTANO pag. 133
TROPEZ pag. 64 - 65
- U** **ULISSE** pag. 12 - 13
- V** **VENUS** pag. 113
VIOLA pag. 118
VIRGINIA pag. 73 - 76 - 77
- Z** **ZAGABRIA** pag. 36 - 37
ZANTE pag. 78 - 79
ZEFIRO pag. 128 - 129
ZOCCOLO IN POLIURETANO pag. 45





SCOPRI LE COLLEZIONI SU [ROSSINI1969.IT](https://rossini1969.it)
VIEW COLLECTIONS ON [ROSSINI1969.IT](https://rossini1969.it)

All rights reserved. Rossini® is a registered trademark. Rossini® maintain exclusive property rights for the contents of this catalogue, and is protected under copyright law. You may not modify, publish, transmit, sell, copy or create extracts or distribute any part of the contents for commercial purposes.



ESSENTIAL
COLLECTION
by **Giblor's**
italian *worklife* specialist

ROSSINI.
Your workwear since 1969

Rossini Trading S.p.A.

Via Pastrengo 7M/9 | 24068, Seriate (BG) - Italy

+39 035 312696 | commerciale@rossini1969.it

P.IVA 01992400166

Capitale sociale: Euro 28 Mln, interamente versati

rossini1969.it

